



Notice of Race Turkey Bowl Regatta

Date: Saturday, November 19 and Sunday November 20, 2023

Location: Puget Sound off Shilshole.

Classes: F18, I-14, 505, Star, Thistle, Tasar, Vanguard 15, RS Aero, Laser, Snipe, Optimist and other centerboard and small keelboat classes with at least five boats may apply.

Event Schedule:

Saturday

0900 – 0930	Late check in
0930 – 0945	Competitor's briefing
1015 – 1045	Practice starts (when available)
1100	First warning signal

All racers are welcome at the Clubhouse by invitation of CYC Commodore.

Sunday

1015 – 1045	Practice starts (when available)
1100	First warning signal
1600	No warning signal after this time

All racers are welcome at the Clubhouse by invitation of CYC Commodore.

Courses: Courses will typically be windward / leeward and may include gates, offsets, and gybe marks. Four to six races are targeted for each day. Target race duration is 20 to 60 minutes.

Scoring: A boat's series score will be the total of her race scores, except that a boat's worst score will be excluded if six or more races are completed. This changes RRS A2.1. One race will constitute a series.

Time Limit: 60 minutes for the first boat in class to *finish*. Other boats must *finish* within 20 minutes of the first boat that *finishes*.

Other Provisions: CYC Notice of Race General Conditions applies

Registration: Visit [CYC Seattle - Racing Calendar](#), click on the race day event link

Confirmation: Season Pass holders shall confirm their participation by Thursday before the race

CYC NOTICE OF RACE GENERAL CONDITIONS

This section of the Notice of Race (NOR) applies to all CYC Races identified in this Race Book. It addresses common items that are incorporated into the event specific NOR for each event, except as specifically noted.

The organizing authority is the Corinthian Yacht Club of Seattle (CYC).

1 Rules

1.1 This regatta will be governed by the rules as defined in the Racing Rules of Sailing (RRS).

1.2 US Sailing prescriptions to the following rules apply: RRS 25.1, 32, 34, 60.3, 61.4, 63.1, 63.2, 63.4, 64.4(b), 67, 70.5(a), 76.1, 81, 86.3, 88.2, Appendix G and R.

Inclusion of additional prescriptions may be noted elsewhere in the NOR or Sailing Instructions (SIs). US Sailing prescriptions are available at www.ussailing.org and in the [US Sailing version of the RRS](#).

1.3 Changes to the rules may be noted elsewhere in the NOR or SIs. If the NOR and SIs are in conflict, the SIs have precedence.

1.4 Prior to the publication of the Sailing Instructions, changes to the NOR will be available on the CYC website at cycseattle.org/racing. After the publication of the Sailing Instructions, changes to the NOR will be available on the official notice board described in the Sailing Instructions.

2 Eligibility and Entry

2.1 Entrants must register online at cycseattle.org/racing, or by form delivered to CYC, and pay appropriate fees by the registration deadline. Registrations accepted at the discretion of the organizing authority or race committee after the deadline may be assessed a \$20 late fee.

2.2 Boats must be insured with valid third-party liability insurance with coverage of at least \$300,000 per incident.

2.3 A boat wishing to use sails with identification different from her registered sail number must receive permission from CYC by the registration deadline or when her late registration is accepted. This changes RRS 77.

2.4 A boat racing in a handicap class must ensure her handicap is issued and recorded by the handicap class organization before the registration deadline or when her late registration is accepted. Boats participating without a valid class certificate may not be scored and are subject to protest if scored. Her entry fee may not be refunded. A change in a boat's handicap will take effect on the day it is recorded by the handicap class organization. Changes are not retroactive. When a boat's handicap class rating changes between races that are part of a series, the boat remains in the same class in which she started the series.

2.5 A boat rated by her handicap class in consideration of water ballast may use water ballast as rated. This changes RRS 51.

2.6 Competitors give absolute right and permission for images and video of themselves and their boat to be published for commercial purposes by the event organizing authority and sponsors and their licensees and may be required to sign a release to complete the boat registration.

CYC NOTICE OF RACE GENERAL CONDITIONS

2.7 Competitors may be required to complete release of liability, depiction release, medical consent, and medical and emergency information forms and agreements to complete the boat registration.

3 Operating and Equipment Requirements

3.1 RRS 40.1 applies for all centerboard boats. In addition, centerboard boat competitors sailing in regattas 1 November through 31 March must also wear a wet suit or dry suit in addition to the required personal floatation device.

3.2 Boats designated in the specific NOR must comply with the equipment requirements of US Sailing's *Safety Equipment Requirements* (SER), according to the category requirement identified, if any, in the NOR. The text of these regulations is available from the US Sailing website at www.ussailing.org. The following changes apply to SER Nearshore:

- (a) SER 2.4 required, except for boats under 9 meters (29 ft) or boats under 12 meters (38 ft) with crew position inboard except briefly to perform a necessary task. For boats that do not meet SER 2.4, RRS 40.1 is in effect.
 - (b) SER 2.4.4 amended to add "Exception: While wire is recommended for durability, if the person in charge believes it to be safer for the crew, lifelines may be high molecular weight polyethylene (HMPE) line with spliced terminations or terminals specifically intended for the purpose. When HMPE is used, the load-bearing portion (core) shall meet or exceed minimum diameter requirements."
 - (c) SER 2.7.2 required for all races.
 - (d) SER 3.7.2 required for all races. Change, "A boat shall have a man overboard pole and flag, with a lifebuoy, a self-igniting light, a whistle, and a drogue attached. A self-inflating..." to "A boat shall have a lifebuoy with a whistle, and a drogue attached. A self-igniting light must also be attached when sailing between sunset and sunrise. A man overboard pole, self-inflating ..."
 - (e) SER 3.22 required for all races
 - (f) SER 3.26 required for all races.
- 3.3 These changes are summarized (for Nearshore) in the SER included in the Appendices.
- 3.3 Keelboats must comply with federal safety regulations concerning life jackets (33 CFR 175 Subpart B), visual distress signals (33 CFR 175 Subpart C), fire extinguishers (46 CFR 25.30), sound producing devices (33 CFR 83 Subpart D), and navigation lights (33 CFR 83 Subpart C). These are identified in US Coast Guard publication *A Boater's Guide to the Federal Requirements for Recreational Boats*, available at www.uscgboating.org.
- 3.4 The race committee or technical committee may inspect a boat at any time before or after racing for compliance with requirements.

CYC NOTICE OF RACE GENERAL CONDITIONS

4 Scoring

- 4.1 The time limit is the maximum allowable time from a boat's starting signal to her finishing time or a time of day. A boat that does not finish within the time limit will be scored Did Not Finish (DNF). This changes RRS 35.
- 4.2 A boat scored OCS, NSC, DNF, RET, DSQ, DNE, UFD, or BFD shall be scored points for the finishing place one more than the number boats *starting, sailing the course, and finishing* and not retiring or being disqualified. A boat scored DNC or DNS shall be scored points for the finishing place two more than the number boats *starting, sailing the course, and finishing* and not retiring or being disqualified. This changes RRS A5.2.
- 4.3 Corrected times for PHRF-NW handicap classes will be calculated using the Time on Distance method.
- 4.4 Corrected times for the ORC classes will be calculated using the Time on Time method, using the all-purpose, medium wind numbers unless otherwise specified.

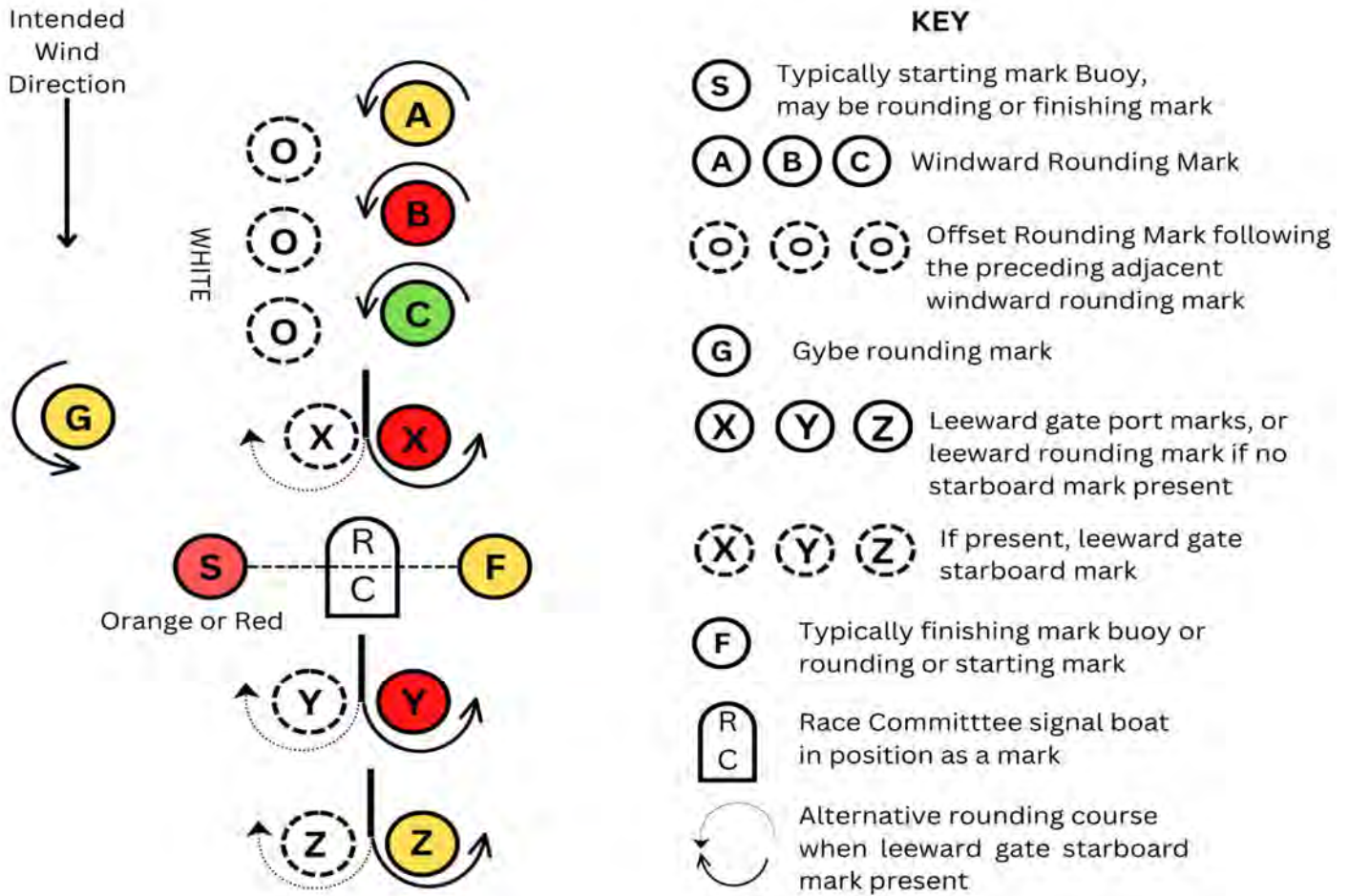
5 Sailing Instructions

- 5.1 Sailing Instructions will be available two days before the regatta on the CYC website at www.cycseattle.org/racing or, if not available on the website, on the notice board at the CYC clubhouse.

6 Risk Statement

- 6.1 RRS 3 states: 'The responsibility for a boat's decision to participate in a race or to continue to race is hers alone.' By participating in this event each competitor agrees and acknowledges that sailing is a potentially dangerous activity with inherent risks. These risks include strong winds and rough seas, sudden changes in weather, failure of equipment, boat handling errors, poor seamanship by other boats, loss of balance on an unstable platform and fatigue resulting in increased risk of injury. Inherent in the sport of sailing is the risk of permanent, catastrophic injury or death by drowning, trauma, hypothermia or other causes. Consequently, the race organizers (organizing authority, race committee, technical committee, protest committee, host club, sponsors, or any other organization or official) will not be responsible for damage to any boat or other property or the injury to any competitor, including death, sustained as a result of participation in this event. By participating in this event, each competitor agrees to release the race organizers from any and all liability associated with such competitor's participation in this event to the fullest extent permitted by law.
- 6.2 Restrictions placed by government authorities on resident activities and business operations may apply and change frequently. CYC has no jurisdiction over the operation of boats (which are the private property of others) participating in CYC events outside the scope of the Racing Rules of Sailing. By registering and participating in a CYC event, the boat owner/operator acknowledges government restrictions may apply and takes full responsibility for operating under those applicable restrictions. CYC is not responsible for any participants failing to follow any restrictions

Mark Descriptions



Buoy Course Marks (position relative to R/C)

The course diagram for buoy course marks shows the general orientation of the race committee signal boat ("R/C"), other marks (identified by the letters S, A, B, C, O, G, X, Y, Z and F), and the intended wind direction. All buoy course marks other than the race committee signal boat are inflatable buoys. Positions are approximate and the diagram is not to scale.

Notes:

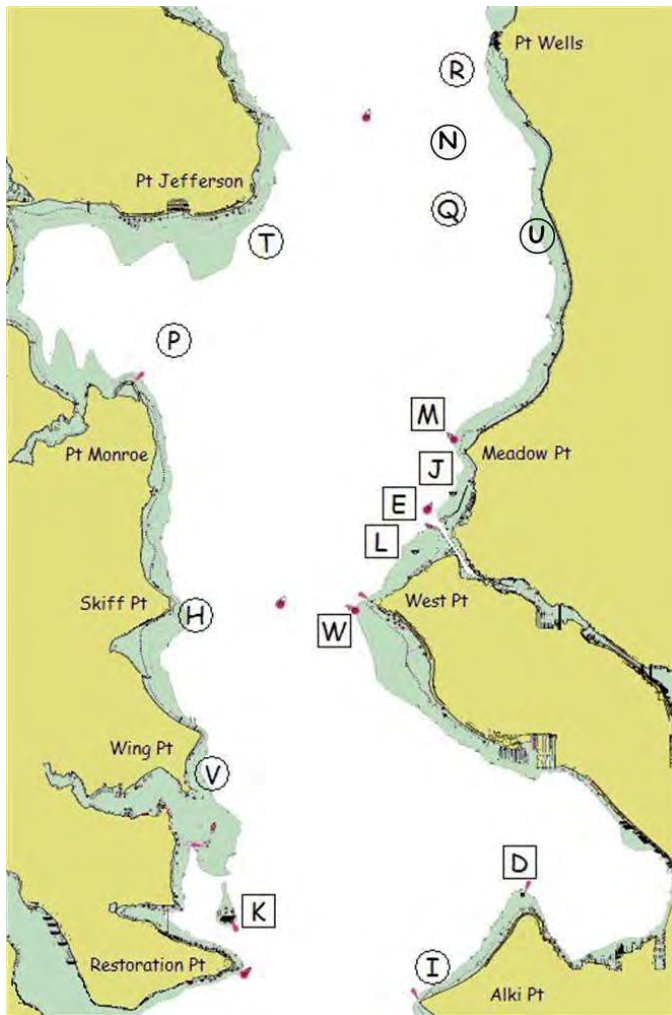
S When a starting mark for a downwind start, may be on either side of the race committee signal boat.

XX When XX is signaled in the course description, mark X may be a gate.

YY When YY is signaled in the course description, mark Y may be a gate.

ZZ When ZZ is signaled in the course description, mark Z may be a gate

Geographic Marks (position based on location)



- ❖ Bearings are magnetic.
- ❖ Distances are nautical miles (NM).
- ❖ Bearings, distances, and positions are approximate.
- ❖ Each temporary mark is shown with its label in a circle.
- ❖ Each permanent mark is near its label in a square box.

- D** Duwamish Head Lt. (LL #16910)
- E** Shilshole Bay Entrance Lighted Buoy G "1" (LL #18125)
- H** Temporary mark 0.3 NM E of Skiff Pt.
- I** Temporary mark 0.5 NM N of Alki Pt.
- J** Round ball buoy with flag 0.25 NM SSW of marina N entrance
- K** Blakely Rock (LL #16830)
- L** White buoy 0.5 NM SW of marina S entrance
- M** Meadow Pt. Buoy (LL #16765)
- N** Temporary mark 1.5 NM E of Traffic Separation Lane Lighted Buoy SF (LL #16745)
- P** Temporary mark 0.5 NM NNE of Pt. Monroe
- Q** Temporary mark 3.0 NM bearing 340° from Meadow Pt. Buoy
- R** Temporary mark 0.5 NM SW of Pt. Wells
- T** Temporary mark 0.5 NM SE of Pt. Jefferson
- U** White spar buoy 2.9 NM bearing 6° from Meadow Pt. Buoy at 47° 44.4N, 122° 22.95W
- V** Temporary mark 0.3 NM NNE of Wing Pt.
- W** West Pt. Buoy (LL #16805)