



RACE BOOK

2022

Revised: January 9, 2022

7755 Seaview Ave NW
Seattle, Washington 98117

www.cycseattle.org • (206) 789-1919 • office@cycseattle.org

Table of Contents

About This Race Book and 2022 Changes	2
CYC Racing Programs	3
Racing Calendar	4
Race Registration	5
Entry Fees and Season Passes	6
2021 Sound Regatta Winners	7
2021 Lake Regatta Winners	8
Lake Washington Racing	9
Notice of Race: Lake Tuesday/Wednesday Evening Series	9
Notice of Race: Lake Moonlight Race	10
Notice of Race: Lake Fall Regatta	11
Puget Sound Racing	12
Notice of Race: Frigid Digit Regatta	12
Notice of Race: Center Sound Series	13
Notice of Race: Center Sound Series: Blakely Rock Race	14
Notice of Race: Center Sound Series: Race #2	15
Notice of Race: Center Sound Series: Race #3	16
Notice of Race: CYC Spring Regatta – Big Boat	17
Notice of Race: CYC Spring Regatta – Small Boat	18
Notice of Race: Sound Wednesday/Thursday Evening Series	19
Race Information: Commodore and Gibson Races	20
Notice of Race: Sound Moonlight Sails	21
Notice of Race: CYC Cypress Island Distance Race	22
Notice of Race: Puget Sound Sailing Championships – Small Boat	23
Notice of Race: Puget Sound Sailing Championships – Big Boat	24
Notice of Race: Turkey Bowl Regatta	25
CYC Standard Notice of Race	26
Appendices	29
US Sailing Safety Equipment Requirements (SER)	29
Puget Sound Sailboat Safety Regulations	33
US Coast Guard Warning	34
Contacts	35
Buoy Course Marks	36
Puget Sound Geographic/Fixed Position Marks	37
CYC Business Members/Sponsors	38

About This Race Book and 2022 Changes

Welcome to CYC's 2022 Racing Season.

The Racebook provides the schedule, the Notices of Race and baseline Sailing Instructions for our Sound and Lake races. It also provides the schedule for our Junior Program, Cruising Fleet Races (e.g., Commodore Gibson) and summer fun events.

There are several changes from recent years incorporated into the 2022 schedule which we hope you will find as improvements and better ways to enjoy your boat, your friends, your club, and the amazing marine environment of the Salish Sea.

Here are a few of the major changes you will find:

1. The Center Sound Series races have been spaced 2 weeks apart to allow time for non-sailing commitments. Note the 2nd and 3rd Center Sound Races are not identified as specific courses. We want the race committee to have the flexibility to send the fleet where the wind is and to provide some variety.
2. We have worked with SYC, STYC, and other clubs to keep events well-spaced throughout the year.
3. The summer evening schedule has been designed to coordinate with Sail Northwest's Fridays. We are also proposing late evening moonlight sails in July and August coordinated with STYC's evening events.
4. CYC is inaugurating our own distance race, likely to stretch across the Straits into the San Juan Islands, with a destination finish location and fleet gathering before delivery back home.
5. There are several events with information "To Be Determined". These will be filled in and posted on the CYC "Telltale" newsletter and will be updated in this Race Book on-line.
6. 2022 will have a focus on being more inclusive of getting juniors on CYC keelboats. If are open to having a junior race with you, please email juniorsprogram@cycseattle.org. Special prizes or acknowledgements may be provided for boats that participate.

One other thing to note: We are holding fees the same as in 2021. However, we are allowing those who wish to make a contribution with their entry to support improvements to our race management fleet.

We hope the 2022 CYC race offerings will find you out on the water enjoying (almost) every minute.

CYC Racing Programs

Corinthian Yacht Club sailors have been racing on Lake Washington at Leschi since our founding in 1945 and on Puget Sound out of Shilshole since before members built our clubhouse in 1969. We have heard that we run more races than any other private club in the country. Corinthian members are passionate about racing.

Evening racing on Lake Washington runs from mid-April through mid-September. J-24s race on Tuesdays and Thistles, San Juan 24s, and Thunderbirds race on Wednesdays. Additional fleets are welcome to form and join the fun.

Evening racing on Puget Sound runs over the same period with keelboats and Stars racing on Wednesday and I-14, 505, Tasar, Vanguard 15, RS Aero, Laser, Snipe, and Optimist classes racing on Thursdays. We offer the Center Sound Series mid-distances races in March and run several weekend buoy-racing regattas. Over the summer months, we also support casual racing on Friday nights off the breakwater.

We've ramped up our youth sailing with the Summer Sail Camp providing education to as many as 350 juniors, intermediate to advanced clinics, Guppy sailing on summer Wednesdays evenings, and family evening sailing on Fridays for more casual and less experienced sailors to enjoy our sport.

Racing Calendar

January

22-23 Frigid Digit

March

5 Center Sound 1 - Blakely Rock
19 Center Sound 2

April

2 Center Sound 3
16-17 CYC Spring Regatta - Large Boats
23-24 CYC Spring Regatta - Small Boats
19-21 Spring Evening 1 (T, W, Th)
26-28 Spring Evening 2 (T, W, Th)

May

3-5 Spring Evening 3 (T, W, Th)
10-12 Spring Evening 4 (T, W, Th)
17-19 Spring Evening 5 (T, W, Th)
24-26 Interim Evening 1 (T, W, Th)
31 Interim Evening 2 (T)

June

1-2 Interim Evening 2 (W, Th)
7-9 Interim Evening 3 (T, W, Th)
11-12 J-Fest

14-16 Interim Evening 4 (T, W, Th)

19-25 Anacortes Race Week
28-30 Interim Evening 5 (T, W, Th)

July

5-7 Summer Evening 1 (T, W, Th)
12-14 Summer Evening 2 (T, W, Th)
13 Sound Moonlight Race
19-21 Summer Evening 3 (T, W, Th)
26-28 Summer Evening 4 (T, W, Th)

August

2-4 Summer Evening 5 (T, W, Th)
5 CYC/Sail Northwest Fridays
6-7 Commodore and Gibson Races
9-11 Fall Evening 1 (T, W, Th)
12 CYC/Sail Northwest Fridays
13 Lake Moonlight Race
16-18 Fall Evening 2 (T, W, Th)
17 Sound Moonlight Sail
19 CYC/Sail Northwest Fridays
20 Juniors Development Series
23-25 Fall Evening 3 (T, W, Th)
26 CYC/Sail Northwest Fridays
30-31 Fall Evening 4 (T, W)

September

1 Fall Evening 4 (Th)
6-8 Fall Evening 5 (T, W, Th)
17-18 CYC Distance Race
17-25 Taser International Championships
TBA Adventuress Cup
TBA Pink Boat Regatta

October

2-3 Puget Sound Sailing Championships (PSSC) Small Boat
8-9 Puget Sound Sailing Championships (PSSC) Large Boat
29-30 ISSA Championships (Juniors)

November

5-6 ISCA Championships (Juniors)
19-20 Turkey Bowl

Race Registration

Registration

Online registration at www.cycseattle.org/racing. See Standard Notice of Race (NOR), 2.1 in this Race Book for more details.

Deadlines

Please register as early as practical to help build your fleet. Early registrations encourage others to participate when they look to see who the competition will be. Large early registrations also encourage sponsorships that enhance the events.

Registrations must be submitted online or received at the club by close of business (normally 5 PM) on the entry deadline. The deadline is stated in the Notice of Race and is typically 1 day before the event. Registrations for weekend races will incur a late fee starting on the Wednesday prior as described in the NOR.

Season's Pass

Discount packages are available for members only as follows:

Lake Season's Pass (+ Sound Weekends). Good for all CYC races on Lake Washington, which includes the Spring, Interim, Summer, and Fall Evening series for either Tuesday or Wednesday night, plus the Lake Moonlight Race and Lake Fall Regatta, plus all CYC Puget Sound weekend races.

Sound Season's Pass (+ Lake Weekends). Good for all CYC races on Puget Sound, which includes the Spring, Interim, Summer, and Fall Evening series for either Wednesday or Thursday night, plus Puget Sound weekend races, plus the Lake Moonlight Race and Lake Fall Regatta.

The Season's Pass is for a given owner and boat or, if you happen to change boats mid-season, for a type of boat that would continue to use the same package. For unique circumstances, contact the Fleet Captain Race.

Contacts

For registration issues, please contact one of the following:

CYC Office office@cycseattle.org
206-789-1919

CYC Fleet Captain Race Steve Johnson; fleetcaptain-race@cyc.org
206-851-2901

Entry Fees

Note: Registration fee for boats fully crewed by Juniors (<19) is half listing below.

Lake Events	Fee	Late Fee	Suggested Donation
Tuesday/Wednesday Evening Series (any 1 of 4)	\$180		\$20
Lake Moonlight Race	\$50	\$10	\$5
Lake Fall Regatta	\$50	\$10	\$5
Lake Season's Pass (plus Sound Weekend Regattas)			
Keelboats	\$650		\$50
Centerboard Boats	\$280		\$30
Sound Events			
Frigid Digit Regatta	\$60	\$10	\$5
Center Sound Series			
Keelboats	\$180	\$10	\$20
Casual Class	\$100	\$10	\$15
Center Sound Series – Individual Race			
Keelboats	\$70	\$10	\$10
Casual Class	\$40	\$10	\$5
CYC Spring Regatta			
Keelboats	\$180	\$10	\$20
Centerboard Boats	\$80	\$10	\$10
Wednesday/Thursday Evening Series (any 1 of 4)			
Keelboats	\$180	\$10	\$20
Centerboard Boats	\$80	\$10	\$10
Commodore-Gibson Cruising Races			
CYC Distance Race	\$50	\$10	\$10
Puget Sound Sailing Championships (PSSC)			
Keelboats	\$180	\$10	\$20
Centerboard Boats	\$80	\$10	\$10
Turkey Bowl	\$60	\$10	\$10
Sound Season's Pass (plus Lake Weekend Regattas)			
Keelboats	\$650		\$50
Centerboard Boats	\$280		\$30

2021 Sound Regatta Winners

Frigid Digit Regatta

Tasar	<i>Pooka</i> , Derek Bottles
RS Aero	<i>Turn the Page</i> , Andy Mack
Laser	206170, Jack Carroll
Laser Radial	187352, Erik Anderson
Laser 4.7	208066, Alex Shemwell
Optimist	19146, Alan Timms

Sound Wednesday Evening Series

Spring	
PHRF 1&2	<i>Shada</i> , Jerry Woodfield
J/105	<i>More Jubilee</i> , Erik Kirsten
J/80	<i>Tastes Like Chicken</i> , Richard Demler
Melges 24	<i>12 Happy Thoughts</i> , David Brede
PHRF 5	<i>Sir Hiss</i> , Viper 640
PHRF 7	<i>Moonshine</i> , M. Klimaschewski
Interim	
PHRF 1&2	<i>Lodos</i> , Tolga Cezik
J/105	<i>More Jubilee</i> , Erik Kirsten
J/80	<i>High Five</i> , Sarah Hampson
Melges 24	<i>Unregistered</i>
PHRF 5	<i>Sir Hiss</i> , Viper 640
PHRF 7	<i>Moonshine</i> , M. Klimaschewski
Summer	
PHRF 0	<i>Frolic</i> , Carl Buchan
PHRF 1&2	<i>Shada</i> , Jerry Woodfield
J/105	<i>Peer Gynt</i> , Sarah Billey
J/80	<i>Tastes Like Chicken</i> , Sarah Hampson
Melges 24	<i>Good Enough</i> , Keith Hammer
PHRF 5	<i>Sir Hiss</i> , Viper 640
PHRF 7	<i>Blur</i> , Tom Perry
Fall	
PHRF 1&2	Tolga Cezik
J/105	<i>Corvo</i> , Tom Kerr
J/80	<i>Tastes Like Chicken</i> , Sarah Hampson
Melges 24	<i>Nikita</i> , Paul Garner
PHRF 5	<i>Sir Hiss</i> , Viper 640
PHRF 7	<i>Blur</i> , Tom Perry

Sound Thursday Evening Series

Spring	
Tasar	<i>Kaboom</i> , Anthony
RS Aero	<i>Loop</i> , Dalton Bergan
Laser	<i>Extreme Ways</i> , Andrew Holdsworth
Summer	
RS Aero	<i>N322MX</i> , Mark Reed
Laser	<i>Marquis</i> , Mark Ross
Tasar	<i>BLM</i> , Jonathan McKee
Snipe	<i>Mindracer</i> , Kirk Smith
Hobie 16	<i>Time Warp</i> , Peter Nelson

Center Sound Series

Overall	<i>Sabrosa</i> , Alex Simanis
Blakely Rocks	<i>Creative</i> , Shauna Walgren & Al Hughes
Scatchet Head	<i>Sabrosa</i> , Alex Simanis
Round the Sound	
J/105	Peer Gynt, Sarah Billey

JFest

J/105	<i>Moose Unknown</i> , John Aitchison
J/80	<i>Underdog</i> , Lek Dimarucot
J/99 (Class 3)	<i>Dash</i> , Stephanie Arnold & Ken Machtley
J/109 (Class 4)	<i>Shada</i> , Jerry Woodfield

Tasar Nationals

Tasar	2981, Libby Jonhson McKee
-------	---------------------------

Commodore Gibson Cruise

Commodore Race	<i>Charlotte</i> , A. Jonhson/A Rooke
Gibson Race	<i>Charlotte</i> , Al Jonhson/Alec Rooke

Puget Sound Sailing Championship (PSSC)

RS Aero	1241, Charles Fulmer
Laser	212592, Extreme Ways
Optimist	22526, Bing Kawasaki
PHRF 1	<i>Smoke</i> , Steve Travis
PHRF 2	<i>Absolutely</i> , Charlie Macaulay
PHRF 3	<i>Nefarious</i> , Dan Randolph
PHRF 4	<i>Vitesse</i> , Benneteau 36.7
J/105	<i>Insubordination</i> , Bucky Rezabek
Melges 24	<i>Good Enough</i> , Matt MacGregor
J/80	<i>Reckless</i> , John Sezer
J/24	<i>Self Abuse</i> , Harry Dursch
San Juan 24	<i>Grauer Geist</i> , Ken Johnson

Turkey Bowl

505	<i>Good Times</i> , Mats Elf
Tasar	<i>Sharp as a Tack</i> , Jay Renehan
Vanguard 15	5, Zev / Erik
RS Aero	<i>Loop</i> , Dalton Bergan
Laser	210702, Jack Carroll
Laser Radial	216516, Alex Shemwell
Laser 4.7	169388, Talia Hamlin
FJ	10, Teddy / Simone
Optimist	<i>Pepe Go</i> , Andrew Lin
C420	8745, Jacob / Denny

Interim

Tasar	<i>Tuna</i> , Stasi Burzucki
RS Aero	<i>Shearwater</i> , Carl Buchan
Laser	<i>Pearl</i> , Lucy Clara Jones

Fall

RS Aero	<i>Meadow Point Hurricane</i> , Dan Falk
Laser	<i>Sterker</i> , Jay Winberg
Laser Radial	<i>Free Radical</i> , Bob Frazer
Snipe	<i>Mindracer</i> , Kirk Smith
Tasar	2687, Brian Johnson
Hobie 16	<i>Timewarp</i> , Peter Nelson

2021 Lake Regatta Winners

Lake Tuesday Evening Series (J/24)

Spring	(Sail #3324), Kevin Downey
Interim	<i>Big Tuna</i> , Lucas Laffitte
Summer	<i>Tremendous Slouch</i> , Scott Milne
Fall	(Sail #3324), Kevin Downey

Lake Fall Regatta

J/24	<i>Hair of the Dog</i> , Jakob Lichtenberg
San Juan 24	<i>Return</i> , Mark Bradner
Thistle	<i>Zugzwang</i> , Graham Vaughan

Lake Wednesday Evening Series

Spring	
San Juan 24	<i>Return</i> , Mark Bradner
T-Bird	<i>Predator</i> , Craig Burnell
Thistle	<i>Hakuna Matata</i> , JD Reddaway
Interim	
San Juan 24	<i>Return</i> , Mark Bradner
T-Bird	<i>Predator</i> , Craig Burnell
Thistle	<i>TTFN</i> , Neal Freeland
Summer	
San Juan 24	<i>Return</i> , Mark Bradner
T-Bird	<i>Predator</i> , Craig Burnell
Thistle	<i>Zugzwang</i> , Graham Vaughan
Fall	
San Juan 24	<i>Grauer Geist</i> , Ken Johnson
T-Bird	<i>Predator</i> , Craig Burnell
Thistle	<i>Just 3883</i> , Reddaway/Bainbridge



J/24 racing in the Tuesday Evening Series

Notice of Race

Lake Tuesday/Wednesday Evening Series

Date: There are four Tuesday series and four Wednesday series, as follows:

	<u>Tuesday Series 2022</u>	<u>Wednesday Series 2022</u>
Spring Series:	Apr 19, 26, May 3, 10, 17	Apr 20, 27, May 4, 11, 18
Interim Series:	May 24, 31 Jun 7, 14, 28	May 25, Jun 1, 8, 15, 29
Summer Series:	Jul 5, 12, 19, 26, Aug 2	Jul 6, 13, 20, 27, Aug 3
Fall Series:	Aug 9, 16, 23, 30, Sep 6	Aug 10, 17, 24, 31 Sep 6

Location: Lake Washington off Leschi.

Classes:

Tuesdays:	J/24
Wednesdays:	Thunderbird, San Juan 24, Thistle. Other centerboard and small keelboat classes with at least five boats may apply.

Schedule:

1715 – 1745	Practice starts (when available)
1800	First warning signal

The race committee intends to conclude racing at a time that will permit boats to return to Leschi Marina before dark.

Courses: Courses will typically be windward / leeward and may include gates, offsets, and gybe marks. Two to four races are targeted for each day. Target race duration is 20 to 60 minutes.

Scoring: A boat's series score will be the total of her race scores, except that a boat's worst score will be excluded if at least six races are completed and two scores will be excluded if at least twelve races are completed. This changes RRS A2.1. One race will constitute a series.

Time Limit: Ninety minutes for the first boat in class to *finish*. Other boats must *finish* within 30 minutes of the first boat that *finishes*.

Awards: Presented at the end of each series.

Other Provisions:

- CYC Standard Notice of Race applies.
- Eligibility: CYC Adult/Family, Senior, Honorary Life, and Junior members. Prospective members may race in these series for up to 12 months.

Registration Fee:

Included in Season's Pass available to CYC members, or:

Keelboat / Centerboard \$180 per series

Registration Deadline: Monday before the start of each series.

Notice of Race Lake Moonlight Race

Date: August 13, 2022 (Saturday)

Location: Lake Washington, starting and finishing lines off Leschi.

Classes: PHRF-NW, IRC/ORC, J/24, Thunderbird, and San Juan 24. Other keelboat classes with at a PHRF rating may apply.

Schedule:

Saturday

1730-1745	Competitor's briefing
1900	First warning signal
2100	No warning signal after this time
After racing	Awards at Leschi near committee boat moorage

Course: Start at the starting line off Leschi, between two robot marks. The Race Committee will be on shore in the vicinity of the North Leschi Starting Shack and communicate starting times, classes and OCS boats via VHF per Sailing Instructions. After starting in a northerly direction, pass under the east span of the Evergreen Point Floating Bridge (AKA the "520 Bridge") northbound, round a permanent white mark approximately 250 E of Magnuson Park Boat Launch to port, pass under the east span of the Evergreen Point Floating Bridge southbound, finish at the start/finish line off Leschi. The first boat to finish shall be the winner. Course distance ~ 10.5 NM.

Shortened Course: The race committee may shorten the course by announcement via VHF per Sailing Instructions prior to the first boat reaching the Evergreen Point Floating Bridge. The shortened course shall require each boat to sail until their masthead is completely to the north side of the Bridge and return to the start/finish line off of Leschi. The winning boat will be calculated by PHRF rating. This changes RRS 32.2. Course distance ~ 5.2 NM.

or assisting vessel will hand out the cards and may display a flashing white beacon light.

Time Limit: Boat *finishing* after 2400, August 13, 2022 will be scored DNF. This changes RRS 35.

Other Provisions:

- CYC Standard Notice of Race applies.
- A boat racing between sunset and sunrise shall carry navigation lights that meet U. S. Coast Guard or applicable government requirements mounted so that they will not be obscured by the sails nor be located below deck level.
- A boat shall carry U.S. Coast Guard (or applicable government entity) flares meeting day-night requirements not older than the expiration date.
- A boat shall have a VHF radio and monitor the RC channel per the Sailing Instructions throughout the race.
- Boats racing shall check in with the RC by VHF radio about 10 minutes before their scheduled start and acknowledge any course changes.

Registration Fee:

Included in Season's Pass available to CYC members, or:

Keelboat \$50

Registration Deadline: 1200 August 12, 2022 (Friday)

\$10 Late fee after 2400 August 10, 2022 (Wednesday)

Notice of Race Lake Fall Regatta

Date: TBD

Location: Lake Washington off Leschi.

Classes: J/24, Thunderbird, San Juan 24, Thistle and other centerboard and small keelboat classes with at least five boats may apply.

Schedule:

Saturday

0900 – 0930	Late check in
0930 – 0945	Competitor's briefing
1015 – 1045	Practice starts (when available)
1100	First warning signal
1600	No warning signal after this time
After racing	Social gathering at regatta site

Courses: Courses will typically be windward / leeward and may include gates, offsets, and gybe marks. Two to four races are targeted for each day. Target race duration is 20 to 60 minutes.

Scoring: A boat's series score will be the total of her race scores, except that a boat's worst score will be excluded if six or more races are completed. This changes RRS A2.1. One race will constitute a series.

Time Limit: Ninety minutes for the first boat in class to *finish*. Other boats must *finish* within 30 minutes of the first boat that *finishes*.

Other Provisions:

- CYC Standard Notice of Race applies.

Registration Fee:

Included in Season's Pass available to CYC members, or:

Keelboat / Centerboard \$50

Registration Deadline: TBD

Puget Sound Racing

Notice of Race Frigid Digit Regatta

Presented by the Seattle Laser and RS Aero Fleets

Date: January 22-23, 2022 (Saturday and Sunday)

Location: Puget Sound off Shilshole.

Classes: RS Aero, Laser, Laser Radial, Laser 4.7, Optimist and other centerboard classes with at least five boats may apply.

Schedule:

Saturday

1030 – 1045	Competitor's briefing
1115 – 1145	Practice starts (when available)
1200	First warning signal
After racing	Party at clubhouse with food available for purchase

Sunday

1015 – 1045	Practice starts (when available)
1100	First warning signal
1600	No warning signal after this time
After racing	Awards party at clubhouse

Courses: Courses will typically be windward / leeward and may include gates, offsets, and gybe marks. Four to six races are targeted for each day. Target race duration is 20 to 40 minutes.

Scoring: A boat's series score will be the total of her race scores, except that a boat's worst score will be excluded if six or more races are completed. This changes RRS A2.1. One race will constitute a series.

Time Limit: Sixty minutes for the first boat in class to *finish*. Other boats must *finish* within 20 minutes of the first boat that *finishes*.

Other Provisions:

- CYC Standard Notice of Race applies.
- Competitors must check in at CYC clubhouse prior to racing.
- The Seattle Laser Fleet Frigid Digit Regatta Perpetual Trophy will be awarded to the winner of the Laser (full rig) fleet.

Awards: Name on the back of perpetual Frigid Digit Trophies

Registration Fee:

Included in Season's Pass available to CYC members, or:

Centerboard \$60

Registration Deadline: 1200 January 21, 2022 (Friday)

\$10 Late fee after 2400 January 19, 2022 (Wednesday)

Notice of Race Center Sound Series

The Center Sound Series is a series of the following events:

Blakely Rock Race	March 5, 2022 (Saturday)
Race #2 – Course TBD*	March 19, 2022 (Saturday)
Race #3 – Course TBD*	April 2, 2022 (Saturday)

Historically, winds, currents, and weather all have been either really strong or mild. This year, the plan is to choose the “best course” for the conditions. The intent is to have a fair and enjoyable race that lasts 3-5 hours.

Classes: PHRF-NW, IRC/ORC and other classes with at least five boats may apply. Monohull, multihull, and casual class boats will race in separate classes.

Scoring: Boats will be scored in class and overall. A boat's series score will be the total of her race scores with no scores excluded. This changes RRS A2.1. One race will constitute a series.

Other Provisions:

- CYC Standard Notice of Race applies.

Awards:

Each Race: 1st, 2nd, and 3rd in class.

Series: 1st overall per course and 1st, 2nd, 3rd in class.

Permanent Trophies: Permanent trophies will be awarded at the CYC Annual Party for race classes overall by race and racing classes series overall (Werner Ohmes Fog Horn Trophy). The Werner Ohmes Fog Horn Trophy is awarded to the boat with the highest score calculated as follows: A boat's score for a race is $100(N + 1 - P)/(N + 1)$ points, where P is her place in her class in that race and N is the number of starters in her class in that race; a boat that does not finish scores $(66)/(N + 1)$ points, a disqualified boat scores $(33)/(N + 1)$ points, and a boat that does not start scores 0 points; a boat's series score is the sum of her score in all races in the series.

Registration Fee:

Included in Season's Pass available to CYC members, or:

\$180 for Center Sound Series (or \$70 per race). Casual Class \$100 for Center Sound Series (or \$40 per race).

Registration Deadline: 1200 Friday before each race

\$10 Late Fee after 2400 Wednesday before each race

Moorage: Guest moorage is available at Shilshole Bay Marina. To make arrangements, call the marina office at VHF 17, 206-787-3006, or 206-601-4089 (after hours). Moorage fees are based on boat length and services.

For more information, see the Notices of Race for each race in the series.

Notice of Race Center Sound Series: Blakely Rock Race

Date: March 5, 2022 (Saturday)

Location: Puget Sound, starting and finishing lines in Shilshole Bay.

Classes: PHRF-NW, IRC/ORC and other classes with at least five boats may apply. Monohull, multihull, and casual class boats will race in separate classes.

Schedule:

Saturday

1000

First warning signal

1400

No warning signal after this time

After racing

Party at clubhouse (dependent on CV 19 restrictions)

Course (Racing Classes):

North Wind: Start by leaving the starting mark buoy to port, round mark “N” to port, round mark “K” to port, and finish by leaving the finishing mark buoy to port. Course distance ~ 21 NM. South Wind: Start by leaving the starting mark buoy to starboard, round mark “K” to starboard, round mark “N” to starboard, and finish by leaving the finishing mark buoy to starboard. Course distance ~ 21 NM.

An alternate course may be posted by the Race Committee, weather depending.

Course (Non-Flying Sails Classes):

North Wind: Start by leaving the starting mark buoy to port, round mark “N” to port, round mark “W” to port, and finish by leaving the finishing mark buoy to port. Course distance ~ 12 NM. South Wind: Start by leaving the starting mark buoy to starboard, round mark “W” to starboard, round mark “N” to starboard, and finish by leaving the finishing mark buoy to starboard. Course distance ~ 12 NM.

An alternate course may be posted by the Race Committee, weather depending.

Time Limit: Eight hours for the first boat in class. Other boats must *finish* the later of 8 hours or 1 hour after of the first boat that *finishes*.

Other Provisions:

- CYC Standard Notice of Race applies.
- Boats must comply with equipment requirement category SER Nearshore, as amended in the Standard NOR and Appendices in this Race Book.
- This race is part of the CYC Center Sound Series.

Awards: For the race, 1st, 2nd, and 3rd in class. Party and awards at the CYC clubhouse after racing. For the Center Sound Series, see awards for the Three Tree Point Race.

Registration Fee:

Included in Season's Pass available to CYC members, or:

\$70 (or \$180 for Center Sound Series). Casual Class \$40 (or \$100 for Center Sound Series).

Registration Deadline: 1200 March 4, 2022 (Friday)

\$10 Late Fee after 2400 March 2, 2022 (Wednesday)

Notice of Race Center Sound Series: Race #2

Date: March 19, 2022 (Saturday)

Location: Puget Sound, starting and finishing lines in Shilshole Bay.

Classes: PHRF-NW, IRC/ORC and other classes with at least five boats may apply. Monohull, multihull, and casual class boats will race in separate classes.

Schedule:

Saturday

1000	First warning signal
1400	No warning signal after this time
After racing	Party at clubhouse (dependent on CV19 restrictions)

Course: (Racing & Non-Flying Sails Classes):

The plan is to choose the “best course” for the conditions. The intent is to have a fair and enjoyable race that lasts 3-5 hours.

Time Limit: Nine hours for the first boat in class. Other boats must *finish* the later of 9 hours or 1 hour after of the first boat that *finishes*.

Other Provisions:

- CYC Standard Notice of Race applies.
- Boats must comply with equipment requirement category SER Nearshore, as amended in the Standard NOR and Appendices in this Race Book.
- This race is part of the CYC Center Sound Series.

Awards: For the race, 1st, 2nd, and 3rd in class. Party and awards at the CYC clubhouse after racing. For the Center Sound Series, see awards for the Three Tree Point Race.

Registration Fee:

Included in Season’s Pass available to CYC members, or:

\$70 (or \$180 for Center Sound Series). Casual Class \$40 (or \$100 for Center Sound Series).

Registration Deadline: 1200 March 18, 2022 (Friday)

\$10 Late Fee after 2400 March 16, 2022 (Wednesday)

Notice of Race Center Sound Series: Race #3

Date: April 2, 2022 (Saturday)

Location: Puget Sound, starting and finishing lines in Shilshole Bay.

Classes: PHRF-NW, IRC/ORC and other classes with at least five boats may apply. Monohull, multihull, and casual class boats will race in separate classes.

Schedule:

Saturday

1000	First warning signal
1400	No warning signal after this time
After racing	Party and awards at clubhouse (dependent on CV19 restrictions)

Course (Racing & Non-Flying Sails Classes):

The plan is to choose the “best course” for the conditions. The intent is to have a fair and enjoyable race that lasts 3-5 hours.

Time Limit: Nine hours for the first boat in class. Other boats must *finish* the later of 9 hours or 1 hour after of the first boat that *finishes*.

Other Provisions:

- CYC Standard Notice of Race applies.
- Boats must comply with equipment requirement category SER Nearshore, as amended in the Standard NOR and Appendices in this Race Book.
- This race is part of the CYC Center Sound Series.

Awards: For the race, 1st, 2nd, and 3rd in class. Party and awards at the CYC clubhouse after racing. Awards for the Center Sound Series will be presented after this race.

Registration Fee:

Included in Season’s Pass available to CYC members, or:

\$70 (or \$180 for Center Sound Series). Casual Class \$40 (or \$100 for Center Sound Series).

Registration Deadline: 1200 April 1, 2022 (Friday)

\$10 Late Fee after 2400 March 30, 2022 (Wednesday)

Notice of Race CYC Spring Regatta – Big Boat

Date: April 16-17, 2022 (Saturday and Sunday)

Location: Puget Sound off Shilshole.

Classes: PHRF-NW, IRC/ORC, Farr 30, J/105, Melges 24, J/80, J/24, Thunderbird, San Juan 24 and other keelboat classes with at least five boats may apply.

Schedule:

Saturday

0900 – 0930	Late check in
0930 – 0945	Competitor's briefing
1015 – 1045	Practice starts (when available)
1100	First warning signal
After racing	Party at clubhouse (dependent on CV19 restrictions)

Sunday

1015 – 1045	Practice starts (when available)
1100	First warning signal
1600	No warning signal after this time
After racing	Awards party at clubhouse (dependent on CV19 restrictions)

Courses: Courses will typically be windward / leeward and may include gates, offsets, and gybe marks. Four to six races are targeted for each day. Target race duration is 20 to 60 minutes.

Scoring: A boat's series score will be the total of her race scores, except that a boat's worst score will be excluded if six or more races are completed. This changes RRS A2.1. One race will constitute a series.

Time Limit: Ninety minutes for the first boat in class to *finish*. Other boats must *finish* within 30 minutes of the first boat that *finishes*.

Other Provisions:

- CYC Standard Notice of Race applies.
- Boats racing in handicap classes must comply with equipment requirement category SER Nearshore, as amended in the Standard NOR and Appendices in this Race Book. These requirements do not apply to boats racing in one design classes.

Registration Fee:

Included in Season's Pass available to CYC members, or:

Keelboat	\$180
----------	-------

Registration Deadline: 1200 April 15, 2022 (Friday)

\$10 Late Fee after 2400 April 13, 2022 (Wednesday)

Guest Moorage and Dry Storage: The Shilshole Marina north parking lot adjacent to the dry storage area will be available for guest dry storage. A limited amount of included guest moorage will be available between piers W and X.

Notice of Race CYC Spring Regatta – Small Boat

Date: April 23-24, 2022 (Saturday and Sunday)

Location: Puget Sound off Shilshole.

Classes: F18, I-14, 505, Star, Thistle, Tasar, Vanguard 15, RS Aero, Laser, Snipe, Optimist and other centerboard and small keelboat classes with at least five boats may apply.

Schedule:

Saturday

0900 – 0930	Late check in
0930 – 0945	Competitor's briefing
1015 – 1045	Practice starts (when available)
1100	First warning signal
After racing	Party at clubhouse (dependent on CV19 restrictions)

Sunday

1015 – 1045	Practice starts (when available)
1100	First warning signal
1600	No warning signal after this time
After racing	Awards party at clubhouse (dependent on CV19 restrictions)

Courses: Courses will typically be windward / leeward and may include gates, offsets, and gybe marks. Four to six races are targeted for each day. Target race duration is 20 to 60 minutes.

Scoring: A boat's series score will be the total of her race scores, except that a boat's worst score will be excluded if six or more races are completed. This changes RRS A2.1. One race will constitute a series.

Time Limit: Ninety minutes for the first boat in class to *finish*. Other boats must *finish* within 30 minutes of the first boat that *finishes*.

Other Provisions:

- CYC Standard Notice of Race applies.

Registration Fee:

Included in Season's Pass available to CYC members, or:

Keelboat	\$180
Centerboard	\$80

Registration Late Fee: Starts 12:01 AM (the best Tuesday before racing)

Registration Deadline: 1200 April 22, 2022 (Friday)

\$10 Late Fee after 2400 March 20, 2022 (Wednesday)

Guest Moorage and Dry Storage: The Shilshole Marina north parking lot adjacent to the dry storage area will be available for guest dry storage. A limited amount of included guest moorage will be available between piers W and X.

Notice of Race Sound Wednesday/Thursday Evening Series

Date: There are four Wednesday series and four Thursday series, as follows:

	<u>Wednesday Series 2021</u>	<u>Thursday Series 2021</u>
Spring Series:	Apr 20, 27, May 4, 11, 18	Apr 21, 28, May 5, 12, 19
Interim Series:	May 25, Jun 1, 8, 15, 29	May 26, Jun 4, 9, 16, 30
Summer Series:	Jul 6, 13, 20, 27, Aug 3	Jul 7, 14, 21, 28, Aug 4
Fall Series:	Aug 10, 17, 24, 31 Sep 7	Aug 11, 18, 25, Sep 1, 8

Location: Puget Sound off Shilshole.

Classes:

Wednesdays:	PHRF-NW, IRC/ORC, Farr 30, J/105, Melges 24, J/80, Star and other keelboat classes with at least five boats may apply.
Thursdays:	F18, I-14, 505, Thistle, Tasar, Vanguard 15, RS Aero, Laser, Snipe, Optimist and other centerboard classes with at least five boats may apply.

Schedule:

1730 – 1800	Practice starts (when available)
1815	First warning signal
Sunset	No warning signal after this time
After racing	Come to the Clubhouse!

Courses: Courses will typically be windward / leeward and may include gates, offsets, and gybe marks. Two to four races are targeted for each day. Target race duration is 20 to 60 minutes.

Scoring: A boat's series score will be the total of her race scores, except that a boat's worst score will be excluded if at least six races are completed and two scores will be excluded if at least twelve races are completed. This changes RRS A2.1. One race will constitute a series.

Time Limit: Ninety minutes for the first boat in class to *finish*. Other boats must *finish* within 30 minutes of the first boat that *finishes*.

Other Provisions:

- CYC Standard Notice of Race applies.
- Eligibility: CYC Adult/Family, Senior, Honorary Life, and Junior members. Prospective members may race in these series for up to 12 months.

Awards: Presented at the end of each series.

Registration Fee:

Included in Season's Pass available to CYC members, or:

Keelboat	\$180
Centerboard	\$80
Casual Class	\$100

Race Information Commodore & Gibson Races

This event is a weekend cruise with the Commodore Race from Shilshole to Port Ludlow on Saturday, potluck dinner Saturday night, and the Gibson Race from Port Ludlow back to Shilshole on Sunday. Handicaps are applied by adjusting the start times for each boat. See website for more information.

Date: August 6-7, 2021 (Saturday and Sunday)

Location: Puget Sound from Shilshole to Port Ludlow.

Schedule: First warning at 1000 on Saturday and 1100 on Sunday.

Courses:

Commodore Race (Saturday): Start at Meadow Point Buoy (LL #16765) and finish at Foulweather Bluff Buoy (LL #16535). Course distance ~ 17.5 NM.

Gibson Race (Sunday): Start at Foulweather Bluff Buoy and finish at Meadow Point Buoy. Course distance ~ 17.5 NM.

The start location may be advanced along the course to facilitate finishing.

Time Limit: 1700 on Saturday and 1900 on Sunday.

Moorage: Get reservations with CYC group at Port Ludlow Marina, 360-437-0513.

Contact: Al Johnson; ajohnson1101@gmail.com

Notice of Race Sound Moonlight Sails

Description: An informal race leaving Shilshole Bay Marina in the early evening, timed to view moonrise over the Seattle waterfront.

Dates: July 13th and August 10th, 2022

Location: Shilshole and Elliott Bay

Classes: All are welcome!

Schedule: Start: July 13th: 2000
Start: August 10th: 1930
Finish: Both days: 2300

Courses: Start in Shilshole Bay, round Duwamish Head daymark.

Results: Results will be based on performance and style. Bonuses earned if a signed and dated object from an Elliott Bay waterfront establishment is obtained without finishing dead last.

Time Limit: 2300. Everyone should be docked and heading home by midnight.

Other Provisions:

- Event is being coordinated with CYC's Wednesday series. Registration in that series is not required.
- CYC Standard Notice of Race mostly applies. Motoring will be allowed to meet the 2300 end of event time.
- Really, this is just for fun, bring friends and relations

Awards: Various awards may be handed out at CYC Clubhouse after event based on performance and style.

Registration Fee:

Included in Season's Pass available to CYC Members.

Registration Deadline:

Hail RC committee boat by radio or voice at least 15 minutes prior to start.

Notice of Race CYC Cypress Island Distance Race

Description: The CYC Cypress Island Race is a distance race beginning in Shilshole Bay, sailing through the eastern San Juan Archipelago and ending at Anacortes. The race will start in reverse order with several rating bands approximately 1 hour apart to generally equalize finish times.

Date: September 17-18, 2022 (Saturday and Sunday)

Location: Puget Sound, Straits of Juan de Fuca and Rosario Strait

Classes: ORC, PHRF-NW Flying and Non-Flying Sail Divisions

Schedule:

Friday, September 16, 2022

1900 Competitor's Gathering and Weather Briefing at CYC

Saturday, September 17, 2022

0855 First warning signal for Class 4 Rating Band

0955, 1055, 1155 Warning signals for Class 3, Class 2, Class 1 Rating Bands

After racing Venue for fleet gathering in Anacortes TBD

Courses:

Long Course: Open to ORC and PHRF boats rating 75 and faster. Start in Shilshole Bay. Leave Whidbey Island to starboard, rounding Cypress & Sinclair Islands, leaving Cypress Reef Buoy C, Boulder Reef Buoy #2 and Sinclair Island Buoy #4 to starboard. Finish in Padilla Bay between Padilla Bay Buoy #5 to port and RC boat. Course length: Approximately 69 NM.

Short Course: Open to PHRF boats rating slower than 75. Start in Shilshole Bay. Leave Whidbey Island to starboard. Finish in entrance to Guemes Channel off Washington Park, Fidalgo Head on Fidalgo Island, between Buoy #2 to port and flag on shore. Course length: Approximately 53 NM.

Scoring: PHRF Time on Distance, ORC GPH Time on Distance

Time Limit: Noon, Sunday, September 18, 2022 – all courses

Other Provisions:

- CYC Standard Notice of Race applies.
- Guest moorage may be arranged for in Cap Sante Marina for boats stopping in Anacortes after finishing.
- US Sailing SER Near Shore Category equipment is required as amended by CYC Standard Notice of Race.

Awards: 1st, 2nd, 3rd in Rating Band. Best Performance for Long and Short Courses: Winning boats that correct out best over the top five finishers in their Rating Band.

Registration Fee:

Included in Season's Pass available to CYC members, or:

Long course & Short course \$80

Registration Deadline: 1200, September 16, 2022 (Friday)

\$10 Late Fee after 2400 September 14, 2022 (Wednesday)

Notice of Race Puget Sound Sailing Championship (Small Boat)

Date: October 2-3, 2021 (Saturday and Sunday)

Location: Puget Sound off Shilshole.

Classes: F18, I-14, 505, J/24, Star, Thistle, Tasar, Vanguard 15, RS Aero, Laser, Snipe, Optimist and other centerboard and small keelboat classes with at least five boats may apply.

Schedule:

Saturday

0900 – 0930	Late check in
0930 – 0945	Competitor's briefing
1015 – 1045	Practice starts (when available)
1100	First warning signal
After racing	Party at clubhouse

Sunday

1015 – 1045	Practice starts (when available)
1100	First warning signal
1600	No warning signal after this time
After racing	Awards party at clubhouse

Courses: Courses will typically be windward / leeward and may include gates, offsets, and gybe marks. Four to six races are targeted for each day. Target race duration is 20 to 60 minutes.

Scoring: A boat's series score will be the total of her race scores with no scores excluded. This changes RRS A2.1. One race will constitute a series.

Time Limit: Ninety minutes for the first boat in class to *finish*. Other boats must *finish* within 30 minutes of the first boat that *finishes*.

Other Provisions:

- CYC Standard Notice of Race applies.

Registration Fee:

Included in Season's Pass available to CYC members, or:

Keelboat	\$180
Centerboard	\$80

Registration Deadline: 1200 October 1, 2022 (Friday)

\$10 Late Fee after 2400 September 29, 2022 (Wednesday)

Guest Moorage and Dry Storage: The Shilshole Marina north parking lot adjacent to the dry storage area will be available for guest dry storage. A limited amount of included guest moorage will be available between piers W and X.

Notice of Race Puget Sound Sailing Championship (Big Boat)

Date: October 8-9, 2021 (Saturday and Sunday)

Location: Puget Sound off Shilshole.

Classes: PHRF-NW, IRC/ORC, Farr 30, J/105, Melges 24, J/80, Thunderbird, San Juan 24 and other keelboat classes with at least five boats may apply.

Schedule:

Saturday

0900 – 0930	Late check in
0930 – 0945	Competitor's briefing
1015 – 1045	Practice starts (when available)
1100	First warning signal
After racing	Party at clubhouse

Sunday

1015 – 1045	Practice starts (when available)
1100	First warning signal
1600	No warning signal after this time
After racing	Awards party at clubhouse

Courses: Courses will typically be windward / leeward and may include gates, offsets, and gybe marks. Four to six races are targeted for each day. Target race duration is 20 to 60 minutes.

Scoring: A boat's series score will be the total of her race scores with no scores excluded. This changes RRS A2.1. One race will constitute a series.

Time Limit: Ninety minutes for the first boat in class to *finish*. Other boats must *finish* within 30 minutes of the first boat that *finishes*.

Other Provisions:

- CYC Standard Notice of Race applies.
- Keelboats racing in handicap classes must comply with equipment requirement category USSER Nearshore, as amended. These requirements do not apply to boats racing in one design classes.

Registration Fee:

Included in Season's Pass available to CYC members, or:

Keelboat	\$180 (Late fee of X)
Casual Class	\$100 (Late fee of X)

Registration Deadline: 1200 October 7, 2022 (Friday)

\$10 Late Fee after 2400 October 5, 2022 (Wednesday)

Guest Moorage and Dry Storage: The Shilshole Marina north parking lot adjacent to the dry storage area will be available for guest dry storage. A limited amount of included guest moorage will be available between piers W and X.

Notice of Race Turkey Bowl Regatta

Date: November 19-20, 2021 (Saturday and Sunday)

Location: Puget Sound off Shilshole.

Classes: F18, I-14, 505, Star, Thistle, Tasar, Vanguard 15, RS Aero, Laser, Snipe, Optimist and other centerboard and small keelboat classes with at least five boats may apply.

Schedule:

Saturday

0900 – 0930	Late check in
0930 – 0945	Competitor's briefing
1015 – 1045	Practice starts (when available)
1100	First warning signal
After racing	Party at clubhouse

Sunday

1015 – 1045	Practice starts (when available)
1100	First warning signal
1600	No warning signal after this time
After racing	Awards party at clubhouse

Courses: Courses will typically be windward / leeward and may include gates, offsets, and gybe marks. Four to six races are targeted for each day. Target race duration is 20 to 60 minutes.

Scoring: A boat's series score will be the total of her race scores, except that a boat's worst score will be excluded if six or more races are completed. This changes RRS A2.1. One race will constitute a series.

Time Limit: Sixty minutes for the first boat in class to *finish*. Other boats must *finish* within 20 minutes of the first boat that *finishes*.

Other Provisions:

- CYC Standard Notice of Race applies.

Registration Fee:

Included in Season's Pass available to CYC members, or:

Centerboard \$60

Registration Deadline: 12:59 PM (the Friday before racing)

\$10 Late Fee after 2400 October 5, 2022 (Wednesday)

CYC Standard Notice of Race

CHECK TO SEE IF THIS NEEDS UPDATE, STEVE OR CHARLIE!

This section of the Notice of Race (NOR) applies to all CYC Races identified in this Race Book. It addresses common items that are incorporated into the event specific NOR for each event, except as specifically noted.

The organizing authority is the Corinthian Yacht Club of Seattle (CYC).

1 Rules

1.1 This regatta will be governed by the rules as defined in the Racing Rules of Sailing (RRS).

1.2 US Sailing prescriptions to the following rules apply: RRS 25.1, 32, 34, 60.3, 61.4, 63.1, 63.2, 63.4, 64.4(b), 67, 70.5(a), 76.1, 81, 86.3, 88.2, Appendix G and R.

Inclusion of additional prescriptions may be noted elsewhere in the NOR or Sailing Instructions (SIs). US Sailing prescriptions are available at www.ussailing.org and in the [US Sailing version of the RRS](#).

1.3 Changes to the rules may be noted elsewhere in the NOR or SIs. If the NOR and SIs are in conflict, the SIs have precedence.

1.4 Prior to the publication of the Sailing Instructions, changes to the NOR will be available on the CYC website at cycseattle.org/racing. After the publication of the Sailing Instructions, changes to the NOR will be available on the official notice board described in the Sailing Instructions.

2 Eligibility and Entry

2.1 Entrants must register online at cycseattle.org/racing, or by form delivered to CYC, and pay appropriate fees by the registration deadline. Registrations accepted at the discretion of the organizing authority or race committee after the deadline may be assessed a \$20 late fee.

2.2 Boats must be insured with valid third-party liability insurance with coverage of at least \$300,000 per incident.

2.3 A boat wishing to use sails with identification different from her registered sail number must receive permission from CYC by the registration deadline or when her late registration is accepted. This changes RRS 77.

2.4 A boat racing in a handicap class must ensure her handicap is issued and recorded by the handicap class organization before the registration deadline or when her late registration is accepted. Boats participating without a valid class certificate may not be scored and are subject to protest if scored. Her entry fee may not be refunded. A change in a boat's handicap will take effect on the day it is recorded by the handicap class organization. Changes are not retroactive. When a boat's handicap class rating changes between races that are part of a series, the boat remains in the same class in which she started the series.

2.5 A boat rated by her handicap class in consideration of water ballast may use water ballast as rated. This changes RRS 51.

2.6 Competitors give absolute right and permission for images and video of themselves and their boat to be published for commercial purposes by the event organizing authority and sponsors and their licensees and may be required to sign a release to complete the boat registration.

2.7 Competitors may be required to complete release of liability, depiction release, medical consent, and medical and emergency information forms and agreements to complete the boat registration.

3 [DP] Operating and Equipment Requirements

3.1 [DP] RRS 40.1 applies for all centerboard boats. In addition, centerboard boat competitors sailing in regattas 1 November through 31 March must also wear a wet suit or dry suit in addition to the required personal floatation device.

3.2 [DP] Boats designated in the specific NOR must comply with the equipment requirements of US Sailing's *Safety Equipment Requirements* (SER), according to the category requirement identified, if any, in the NOR. The text of these regulations is available from the US Sailing website at www.ussailing.org. The following changes apply to SER Nearshore:

(a) SER 2.4 required, except for boats under 9 meters (29 ft) or boats under 12 meters (38 ft) with crew position inboard except briefly to perform a necessary task. For boats that do not meet SER 2.4, RRS 40.1 is in effect.

(b) SER 2.4.4 amended to add "Exception: While wire is recommended for durability, if the person in charge believes it to be safer for the crew, lifelines may be high molecular weight polyethylene (HMPE) line with spliced terminations or terminals specifically intended for the purpose. When HMPE is used, the load-bearing portion (core) shall meet or exceed minimum diameter requirements."

(c) SER 2.7.2 required for all races.

(d) SER 3.7.2 required for all races. Change, "A boat shall have a man overboard pole and flag, with a lifebuoy, a self-igniting light, a whistle, and a drogue attached. A self-inflating..." to "A boat shall have a lifebuoy with a whistle, and a drogue attached. A self-igniting light must also be attached when sailing between sunset and sunrise. A man overboard pole, self-inflating ..."

(e) SER 3.22 required for all races

(f) SER 3.26 required for all races.

These changes are summarized (for Nearshore) in the SER included in the Appendices.

3.3 [DP] Keelboats must comply with federal safety regulations concerning life jackets (33 CFR 175 Subpart B), visual distress signals (33 CFR 175 Subpart C), fire extinguishers (46 CFR 25.30), sound producing devices (33 CFR 83 Subpart D), and navigation lights (33 CFR 83 Subpart C). These are identified in US Coast Guard publication *A Boater's Guide to the Federal Requirements for Recreational Boats*, available at publications.usa.gov or www.uscgboating.org.

3.4 [DP] The race committee or technical committee may inspect a boat at any time before or after racing for compliance with requirements.

4 Scoring

4.1 The time limit is the maximum allowable time from a boat's starting signal to her finishing time or a time of day. A boat that does not finish within the time limit will be scored Did Not Finish (DNF). This changes RRS 35.

4.2 A boat scored OCS, NSC, DNF, RET, DSQ, DNE, UFD, or BFD shall be scored points for the finishing place one more than the number boats *starting, sailing the course, and finishing* and not retiring or being disqualified. A boat scored DNC or DNS shall be scored points for the finishing place two more than the number boats *starting, sailing the course, and finishing* and not retiring or being disqualified. This changes RRS A5.2.

4.3 Corrected times for PHRF-NW handicap classes will be calculated using the Time on Distance method.

5 Sailing Instructions

5.1 Sailing Instructions will be available two days before the regatta on the CYC website at www.cycseattle.org/racing or, if not available on the website, on the notice board at the CYC clubhouse.

6 Risk Statement

6.1 RRS 3 states: "The responsibility for a boat's decision to participate in a race or to continue to race is hers alone." By participating in this event each competitor agrees and acknowledges that sailing is a potentially dangerous activity with inherent risks. These risks include strong winds and rough seas, sudden changes in weather, failure of equipment, boat handling errors, poor seamanship by other boats, loss of balance on an unstable platform and fatigue resulting in increased risk of injury. Inherent in the sport of sailing is the risk of permanent, catastrophic injury or death by drowning, trauma, hypothermia or other causes. Consequently, the race organizers (organizing authority, race committee, technical committee, protest committee, host club, sponsors, or any other organization or official) will not be responsible for damage to any boat or other property or the injury to any competitor, including death, sustained as a result of participation in this event. By participating in this event, each competitor agrees to release the race organizers from any and all liability associated with such competitor's participation in this event to the fullest extent permitted by law.

6.2 Restrictions on resident activities and business operations have been put in place by government authorities to control the spread of COVID 19 virus. These restrictions change frequently. CYC has no jurisdiction over the operation of boats (which are the private property of others) participating in CYC events outside the scope of the Racing Rules of Sailing. By registering and participating in a CYC event, the boat owner/operator acknowledges that various COVID 19 restrictions may apply and takes full responsibility for operating under those applicable restrictions. CYC is not responsible for any participant's failure to follow any such restrictions.

Appendices

US Sailing Safety Equipment Requirements (SER)

Nearshore Category as Amended by the CYC Notice of Race

Section Name	#	Requirement	Nearshore
Definition	1.0.3	Nearshore: Races primarily sailed during the day, close to shore, in relatively protected waters.	Required
Overall: Responsibility	1.2	The safety of a boat and her crew is the sole and inescapable responsibility of the "person in charge", as per RRS 46, who shall ensure that the boat is seaworthy and manned by an experienced crew with sufficient ability and experience to face bad weather. S/he shall be satisfied as to the soundness of hull, spars, rigging, sails and all gear. S/he shall ensure that all safety equipment is at all times properly maintained and safely stowed and that the crew knows where it is kept and how it is to be used.	Required
Overall: Responsibility	1.2.1	Should there be an incident during a race the Organizing Authority or US Sailing may conduct an investigation to determine the facts of the incident and provide recommendations. By participating in a race conducted under the SER, the person in charge, each competitor and boat owner agrees to reasonably cooperate with the organizing authority and US Sailing in the development of an independent incident report.	Required
Overall: Inspections	1.3	A boat may be inspected at any time by an equipment inspector or measurer appointed for the event. If she does not comply with these regulations, her entry may be rejected or she will be subject to a protest filed by the RC. A Violation of the Safety Equipment Requirements may result in a penalty other than disqualification.	Required
Overall: Equipment and Knowledge	1.4	All equipment required shall function properly, be regularly checked, cleaned and serviced, and be of a type, size and capacity suitable for the intended use and size of the boat and the size of the crew. This equipment shall be readily accessible while underway and, when not in use, stored in such a way that deterioration is minimized.	Required
Overall: Secure Storage	1.5	A boat's heavy items such as batteries, stoves, toolboxes, anchors, chain and internal ballast shall be secured.	Required
Overall: Watertight Integrity	1.7	A boat's hull, including, deck, coach roof, windows, hatches and all other parts, shall form an integral watertight unit, and any openings in it shall be capable of being immediately secured to maintain this integrity.	Required
Hull and Structure: Stability	2.2.3	A boat with moveable or variable ballast (water or canting keel) shall comply with the requirements of Appendix K.	Required

Section Name	#	Requirement	Nearshore
Hull and Structure: Lifelines	2.4.1	A boat's deck including the headstay shall be surrounded by a suitably strong enclosure, typically consisting of lifelines and pulpits, meeting the requirements in 2.4.2 to 2.4.8. Does not apply for boats under 9 meters (29 ft) or boats under 12 meters (38 ft) with crew position inboard except briefly to perform a necessary task.	<i>CYC Required</i> NOR 3.2(a)
Hull and Structure: Lifelines	2.4.2	A boat's stanchion and pulpit bases shall be within the working deck.	<i>CYC Required</i> NOR 3.2(a)
Hull and Structure: Lifelines	2.4.3	Bow pulpits may be open, but the opening between the vertical portion of stanchion pulpit and any part of the boat shall not exceed 14.2" (360mm).	<i>CYC Required</i> NOR 3.2(a)
Hull and Structure: Lifelines	2.4.4	Lifelines shall be uncoated stainless steel wire. A multipart-lashing segment not to exceed 4" per end termination for the purpose of attaching lifelines to pulpits is allowed. Lifelines shall be taut. Exception: While wire is recommended for durability, if the person in charge believes it to be safer for the crew, lifelines may be high molecular weight polyethylene (HMPE) line with spliced terminations or terminals specifically intended for the purpose. When HMPE is used, the load-bearing portion (core) shall meet or exceed minimum diameter requirements.	<i>CYC Required</i> NOR 3.2(b)
Hull and Structure: Lifelines	2.4.4.1	Lifeline deflection shall not exceed the following: a) When a deflecting force of 9 lbs (40N) is applied to a lifeline midway between supports of an upper or single lifeline, the lifeline shall not deflect more than 2" (50mm). This measurement shall be taken at the widest span between supports that are aft of the mast. b) When a deflecting force of 9 lbs (40N) is applied midway between supports of an intermediate lifeline of all spans that are aft of the mast, deflection shall not exceed 5" (120mm) from a straight line between the stanchions.	<i>CYC Required</i> NOR 3.2(a)
Hull and Structure: Lifelines	2.4.5	The maximum spacing between lifeline supports (e.g. stanchions and pulpits) shall be 87" (2.2m).	<i>CYC Required</i> NOR 3.2(a)
Hull and Structure: Lifelines	2.4.6	Boats under 30' (9.14m) shall have at least one lifeline with 18" (457mm) minimum height above deck, and a maximum vertical gap of 18" (457mm). Taller heights will require a second lifeline. The minimum diameter shall be 1/8" (3mm).	<i>CYC Required</i> NOR 3.2(a)
Hull and Structure: Lifelines	2.4.7	Boats 30' and over (9.14m) shall have at least two lifelines with 24" (762mm) minimum height above deck, and a maximum vertical gap of 15" (381mm). The minimum diameter will be 5/32" (4mm) for boats to 43' (13.1m) and 3/16" (5mm) for boats over 43' (13.1m).	<i>CYC Required</i> NOR 3.2(a)

Section Name	#	Requirement	Nearshore
Hull and Structure: Lifelines	2.4.8	Toe rails shall be fitted around the foredeck from the base of the mast with a minimum height of 3/4" (18mm) for boats under 30' (9.14m) and 1" (25mm) for boats over 30'. An additional installed lifeline that is 1-2" (25-51mm) above the deck will satisfy this requirement for boats without toerails.	<i>CYC Required NOR 3.2(a)</i>
Hull and Structure: Lifelines	2.4.9	Trimarans are exempted from the lifeline requirement where there is a trampoline outboard of the main hull, except that a lifeline must run from the top of a bow pulpit to the forward crossbeam at the outboard edge of the bow net or foredeck. Catamarans with trampoline nets between the hulls are exempted from the lifeline requirement. All catamarans are exempted from the need for pulpits and lifelines across the bow.	<i>CYC Required NOR 3.2(a)</i>
Hull and Structures: Dewatering pumps	2.5.3	A boat shall have a manual bilge pump of at least a 10 GPM (37.8 liter per minute) capacity.	Required
Hull and Structure: Mechanical Propulsion	2.7.2	A boat shall have a mechanical propulsion system that is quickly available and capable of driving the boat at a minimum speed in knots equivalent to the square root of LWL in feet (1.8 times the square root of the waterline in meters) for 4 hours.	<i>CYC Required NOR 3.2(c)</i>
Safety Equipment: Personal	3.1.3	Each crewmember shall have a life jacket intended for small boat sailing or other active boating. Each such life jacket shall be USCG, ISO, or applicable government approved or shall meet the ocean requirement of 3.1.1.	Required
Safety Equipment: Navigation Lights	3.3.1	A boat racing between sunset and sunrise shall carry navigation lights that meet U. S. Coast Guard or applicable government requirements mounted so that they will not be obscured by the sails nor be located below deck level.	Required
Safety Equipment: Fire Extinguishers	3.4	A boat shall carry fire extinguisher(s) that meets U.S. Coast Guard or applicable government requirements, when applicable.	Required
Safety Equipment: Sound Producing Equipment	3.5	A boat shall carry-sound-making devices that meets U.S. Coast Guard or applicable government requirements, when applicable.	Required
Safety Equipment: Visual Distress Signals	3.6.6	A boat shall carry U.S. Coast Guard (or applicable government entity) flares meeting day-night requirements not older than the expiration date.	Required
Safety Equipment: Man Overboard	3.7.2	A boat shall have a lifebuoy with a whistle, and a drogue attached. A self-igniting light must also be attached when sailing between sunset and sunrise. A man overboard pole, self-inflating Man Overboard Module, Dan Buoy or similar device will satisfy this requirement. Self-inflating apparatus shall be tested and serviced in accordance with the manufacturer's specifications. These items shall be stored on deck, ready for immediate use, and affixed in a manner that allows for a "quick release".	<i>CYC Required NOR3.7(d)</i>
Safety Equipment: Man Overboard	3.7.3	A boat shall have a throwing sock-type heaving line of 50' (15m) or greater of floating polypropylene line readily accessible to the cockpit.	Required
Safety Equipment: Man Overboard	3.7.4	A boat shall carry a Coast Guard or applicable government approved "throwable device". If the device carried under 3.7.1 or 3.7.2 satisfies this requirement, then no additional device is needed.	Required

Section Name	#	Requirement	Nearshore
Safety Equipment: Emergency Communications	3.8.3	A boat shall have a VHF radio which may be fixed or handheld.	Required
Safety Equipment: Navigation	3.19.1	A boat shall have a permanently mounted magnetic compass independent of the boat's electrical system suitable for steering at sea.	Required
Safety Equipment: Damage Control	3.22	A boat shall carry soft plugs of an appropriate material, tapered and of the appropriate size, attached or stowed adjacent to every through-hull opening.	<i>CYC Required NOR 3.2(e)</i>
Gear: Anchoring	3.23	A boat shall carry one anchor, meeting the anchor manufacturer's recommendations based on the yacht's size, with a suitable combination of chain and line.	Required
Gear: Lights	3.24.3	A boat shall carry at least two watertight flashlights with spare batteries in addition to the requirement of 3.24.1.	Required
Gear: Medical Kits	3.25	A boat shall carry a first aid kit and first aid manual suitable for the likely conditions of the passage and the number of crew aboard.	Required
Gear: Radar Reflectors	3.26	A boat shall carry an 11.5" (292mm) diameter or greater octahedral radar reflector or one of equivalent performance.	<i>CYC Required NOR 3.2(f)</i>
Gear: Dewatering	3.27.2	A boat shall carry one sturdy bucket of at least two gallons (8 liters) capacity with lanyards attached.	Required
Skills: Man Overboard	4.2	Annually, two-thirds of the boat's racing crew shall practice man-overboard procedures appropriate for the boat's size and speed. The practice shall consist of marking and returning to a position on the water, and demonstrating a method of hoisting a crewmember back on deck, or other consistent means of reboarding the crewmember.	Required
Skills: Crew Training	4.4	As required in 1.2 above the person in charge shall ensure that all crew members know where all emergency equipment is located and how to operate the equipment. In addition, the person in charge and crew should discuss how to handle various emergency situations including Crew Overboard, Grounding, Loss of steering, Flooding, Fire, Dismasting, and Abandon Ship.	Required
Skills: Crew Training	4.6	Lifejackets as described in 3.1.1 – 3.1.3 should be worn by all crew on deck in any conditions where recovery may be difficult. It is recommended that lifejackets be worn by all crew on deck unless the person in charge has indicated that they may be set aside.	Required

Puget Sound Sailboat Safety Regulations

2014 Revision as adopted by Corinthian Yacht Club of Seattle, Seattle Yacht Club, Shilshole Bay Yacht Club, and Sloop Tavern Yacht Club

We must share Puget Sound with its commercial traffic, including many deep-water vessels and tows. It is sobering to note that, if your boat is one mile dead-ahead of a freighter coming down the Sound at normal speed, and the freighter's helm is put hard over to avoid you, the freighter's bow will miss you, but her stern will not! Obviously, this implies that early and decisive action is required to keep your boat out of the path of a large oncoming vessel or tow. The requirements of this document may be incorporated into an event by reference in a notice of race.

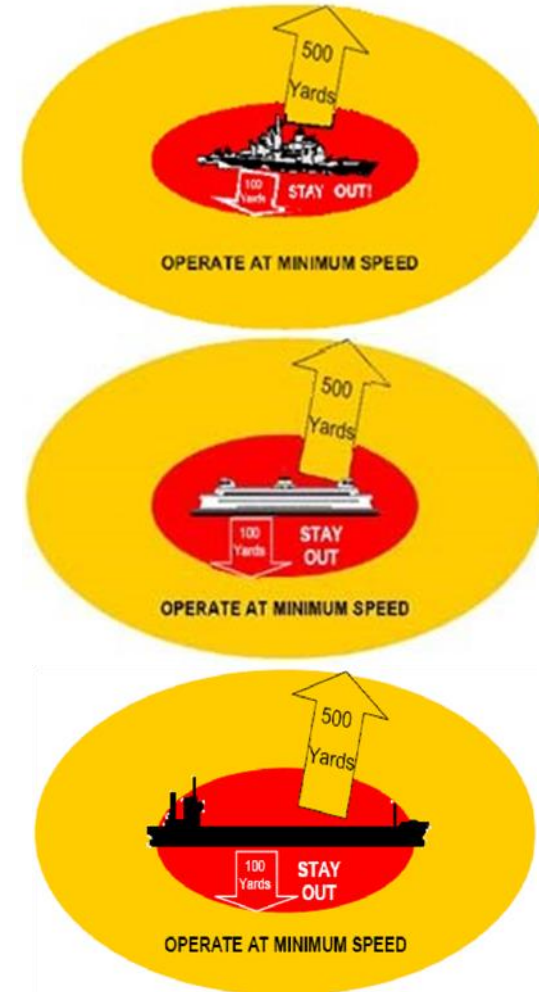
1. Yachts must not sail across a tow line, too close ahead, or too close alongside of commercial traffic. Deep water vessels have limited ability to change course and speed. Barges under tow can yaw unexpectedly well out to the side at speeds essentially the same as they are being towed. Yachts should not pass less than one mile ahead and 1/4 mile to the side of large vessels.
2. Rule 10 of the International and Inland Rules to Prevent Collisions at Sea (COLREGS) requires that no power-driven vessel less than 20 meters (66 feet) in length, and no sailing vessel (of any size) may impede the safe passage of a power-driven vessel following a Vessel Traffic System (VTS) Lane.
3. Rule 9 of the COLREGS requires that no power vessel of less than 20 meters (66 feet) in length and no sailing vessel (of any length) shall impede the safe passage of any vessel which can navigate only within a narrow channel or fairway. Puget Sound can be considered a "narrow channel" for most large commercial traffic. "Impede" means to cause to alter speed or course or to take evasive action.
4. A yacht in position where it may impede commercial traffic must exit from the "danger area" immediately, under auxiliary power if necessary. If power is used, it must be reported to the Race Committee at the finish line. Also, a written report must be made on a protest form, showing the location, time, duration of power use, speed, direction of exit, and that the competitive position of the yacht was not improved. If the last item cannot be demonstrated adequately, a time penalty may be imposed.
5. Navigation lights must be shown between sunset and sunrise as required by the International Rules of the Road.
6. Observed and/or reported violations of the safety regulations may be protested. The Race Committee shall have the option of issuing a "warning" when deemed appropriate. Warnings are recorded and may be considered when judging any future reports.

US Coast Guard Warning

The following information was provided by the US Coast Guard.

Do not approach within 100 yards of any Navy Vessel, Washington State Ferry, or Ship. If you need to pass within 100 yards of these vessels in order to ensure a safe passage in accordance with the Navigation Rules, you must contact the ship on VHF-FM channel 16 or 13. (33 CFR 165.2030, 165.1317, 165.1313)

You must operate at minimum speed within 500 yards of any of these vessel types.



Violations of these Security Zones are a felony offense, punishable by up to 6 years in prison and/or up to \$250,000 in fines.

Contacts

Race Organization Contacts

Fleet Captain Race	Steve Johnson	fleetcaptain-race@cyc.org
Lake Protest Chair	Wayne Balsiger	lakeprotest@cyc.org
Sound Protest Chair	Jeff Snell	soundprotest@cyc.org
PHRF Handicapper	Matthew Wood	matthewewood@outlook.com

Business Management Staff

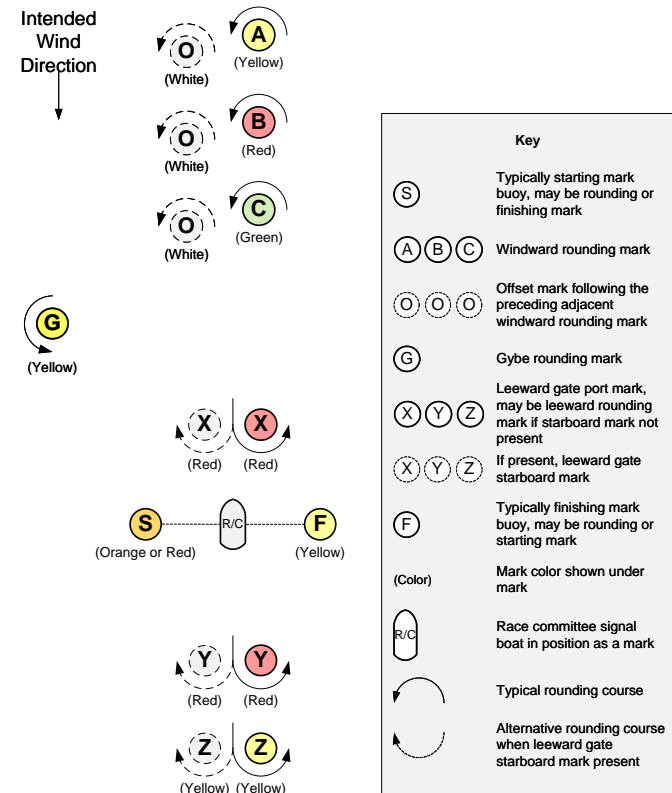
Business Manager	Cindy Barrett	office@cycseattle.org
		206-789-1919

Principle Race Officers (PROs)

Lake PRO	Troy Childs	tchilds@auburnvw.com
Sound PRO	Egor Klevak	comorado@gmail.com
Senior PRO	Charley Rathkopf	charley-cyc@rathkopf.org
PRO-at-Large	Geoff Pease	cyc@pease.org

Buoy Course Marks (relative positions)

This is a typical configuration. Please note that the Sailing Instructions for a particular regatta may use modified or different mark descriptions.

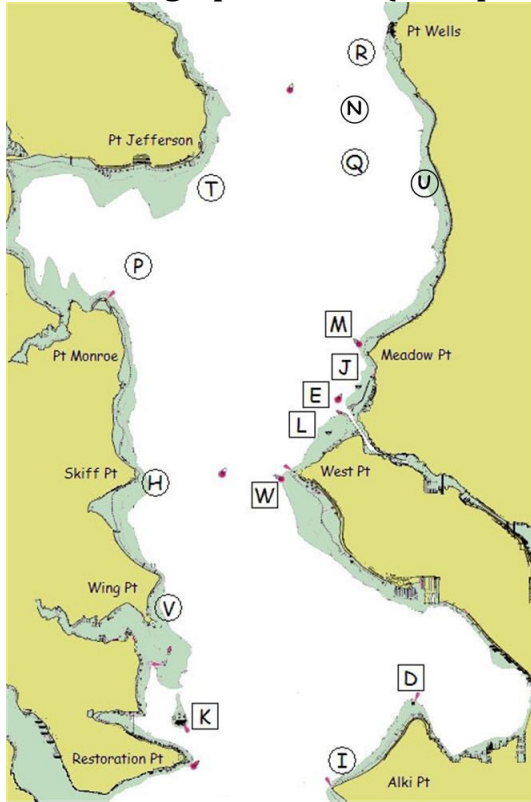


The course diagram for buoy course marks shows the general orientation of the race committee signal boat ("R/C"), other marks (identified by the letters S, A, B, C, O, G, X, Y, Z and F), and the intended wind direction. All buoy course marks other than the race committee signal boat are inflatable buoys. Positions are approximate and the diagram is not to scale.

Notes:

- S When a starting mark for a downwind start, may be on either side of the race committee signal boat.

Puget Sound Geographic Marks (fixed positions)



Bearings are magnetic. Distances are nautical miles (NM). Bearings, distances, and positions are approximate. Each temporary mark is shown with its label in a circle. Each permanent mark is near its label in a square box.

- D Duwamish Head Lt. (LL #16910)
- E Shilshole Bay Entrance Lighted Buoy G "1" (LL #18125)
- H Temporary mark 0.3 NM E of Skiff Pt.
- I Temporary mark 0.5 NM N of Alki Pt.
- J Round ball buoy with flag 0.25 NM SSW of marina N entrance
- K Blakely Rock (LL #16830)
- L White buoy 0.5 NM SW of marina S entrance
- M Meadow Pt. Buoy (LL #16765)
- N Temporary mark 1.0 NM E of Traffic Separation Lane Lighted Buoy SF (LL #16745)
- P Temporary mark 0.5 NM NNE of Pt. Monroe
- Q Temporary mark 3.0 NM bearing 340° from Meadow Pt. Buoy
- R Temporary mark 0.5 NM SW of Pt. Wells
- T Temporary mark 0.5 NM SE of Pt. Jefferson
- U White spar buoy 2.9 NM bearing 6° from Meadow Pt. Buoy at 47° 44.4N, 122° 22.95W
- V Temporary mark 0.3 NM NNE of Wing Pt.
- W West Pt. Buoy (LL #16805)

CYC Business Members

These businesses are corporate members of Corinthian Yacht Club. Please thank them for their support and involvement in sailing.

