



Sharing the Sailing Community

Turkey Bowl

November 14-15, 2020

Sailing Instructions

1 RULES

- 1.1 This regatta will be governed by the rules as defined in the Racing Rules of Sailing (RRS).
- 1.2 US Sailing prescriptions to the following rules apply: RRS 34, 40, 48.1, 60.3, 61.4, 63.2, 63.4, 64.3(b), 67, 70.5(a), 76.1, 82, 86.3, 88.2, Appendix G and R. Inclusion of additional prescriptions may be noted elsewhere in the Notice of Race or Sailing Instructions. US Sailing prescriptions are available at www.ussailing.org.
- 1.3 Changes to the rules may be noted elsewhere in the Notice of Race or Sailing Instructions. If the Notice of Race and Sailing Instructions are in conflict, the Sailing Instructions have precedence.
- 1.4 RRS Appendix T shall apply.

2 NOTICES TO COMPETITORS

- 2.1 Notices to competitors will be posted on the official notice board (the bulletin board near V dock) and on the cyc website at www.cycseattle.org
- 2.2 The race committee may provide unofficial communication, which is communication not governed by the rules, at any time by hail or over VHF. A request for redress may not be based on any aspect of unofficial communication, including content, timeliness, or failure to hear. This changes RRS 62.1(a).
- 2.3 See class list for preferred VHF radio channel.

3 CHANGES TO SAILING INSTRUCTIONS

- 3.1 Changes to the Sailing Instructions posted on the official notice board will be posted by 0930 the day it takes effect, except that any change in the schedule of races will be posted by 1800 the day before it takes effect.

4 SCHEDULE

- 4.1 The schedule is as follows:

1015 - 1045	Practice starts (when available)
1100	First warning signal
<u>Sunday</u>	
1015 - 1045	Practice starts (when available)
1100	First warning signal
1530	No warning signal after this time

- 4.2 A target of at least four and up to six races may be sailed each day with a typical race duration of 20 to 60 minutes.

5 SIGNALS MADE ASHORE

- 5.1 Signals made ashore will be made from a race committee signal boat while moored at Shilshole Marina
- 5.2 When flag AP is displayed ashore, the warning signal will be made not less than 30 minutes after the removal of AP unless at that time the race is postponed again or abandoned. This changes RRS Race Signals AP.

6 RACING AREA AND RACE COMMITTEE SIGNAL BOAT

- 6.1 The racing area is Puget Sound in the vicinity of Shilshole Bay .
- 6.2 The race committee signal boats will be the CYC M/V YC 5 . If necessary, an alternate race committee signal boat may be used. The race committee signal boat will display the CYC burgee and a blue "R/C" flag or sign.

7 CLASSES

- 7.1 Open to all centerboard and small keelboat dinghies with at least five boats to a class. A unified class and start may be assigned and designated.
- 7.2 The class list and assignments will be announced as a notice to competitors issued by 1200 on Friday before the regatta. Subsequent changes may be made with the same process as changes to the Sailing Instructions.

8 COURSES

- 8.1 The course will be signaled from a reader board on the race committee signal boat. The course description is a series of letters on one row indicating the marks and their required sequence. The first letter displayed is the starting mark buoy, the last letter is the finishing mark buoy, and the letters between are rounding marks. The class number or symbol may precede the course for that class and must be shown if there are multiple rows. Multiple classes may be listed on one row.
- 8.2 Marks are specified in Attachment A: Mark Descriptions.
- 8.3 All rounding marks other than gate marks and mark F must be left to port. When mark F is used as a rounding mark, a boat must round by crossing the finishing line from the direction of the last mark. When mark S is used as a rounding mark following a leeward mark, a boat



Sharing the Sailing Community

must also cross the starting line from the direction of the last mark when rounding.

- 8.4 A leeward rounding mark may be a gate mark. If one of the gate marks is missing, the course at that mark is to round the remaining mark to port.
- 8.5 If a starting or finishing mark is substituted by an object displaying flag M, repetitive sound signals are not required. This changes RRS 34(b).
- 8.6 After completing the first leg of the course, a boat shall not cross the finishing line unless she is finishing or rounding the finishing mark buoy as a rounding mark. This changes RRS 28.2. A boat that fails to observe this restriction may exonerate herself by taking a Two-Turns Penalty as described in RRS 44.2. This changes RRS 44.1 but does not change RRS 44.1(b). A boat that fails to exonerate herself will be scored Did Not Finish (DNF) without a hearing. This changes RRS 63.1 and A5. The finishing line and marks is an obstruction and not a mark for a boat required to keep clear.
- 8.7 Except while rounding mark "E" as a mark of the course, a boat must not enter the area near the Shilshole Marina south entrance between Shilshole Bay entrance lighted buoy G "1", entrance lighted buoy R "2", and breakwater light G "3". A boat that fails to observe this restriction may not exonerate herself. This area is an obstruction for a boat required to keep clear.

9 THE START

- 9.1 The starting line will be between a staff displaying an orange flag on the race committee signal boat and the course side of the starting mark buoy.
- 9.2 Starting visual signal flag P may be replaced by a blue cylindrical shape. This changes RRS 26.
- 9.3 If a general recall for a preceding class is signaled after the warning signal of a succeeding class, then the visual signals for the succeeding class will be removed and the start of the succeeding class will be considered abandoned without further signal.
- 9.4 If a boat is subject to RRS 29.1, Individual Recall, or RRS 30, Starting Penalties, the race committee may attempt to hail her sail number directly and on VHF. This is unofficial communication as in Sailing Instructions 2.2.
- 9.5 A boat starting later than three minutes after her start signal will be scored Did Not Start (DNS). This changes RRS A5.
- 9.6 A boat whose warning signal has not been made must avoid the starting area when other boats are racing but have not yet started.
- 9.7 The race committee signal boat, when a starting mark, may maneuver to maintain the starting line at any time, including while anchored.

10 THE FINISH

- 10.1 The finishing line will be between a staff displaying an orange flag on the race committee signal boat and the course side of the RC boat.
- 10.2 The race committee may adjust the finishing marks to maintain the finish pin without regards to RR 33.

11 TIME LIMIT

- 11.1 The time limit is the maximum allowable time from a boat's starting signal to her finishing time or a time of day. A boat that does not finish within her time limit will be scored Did Not Finish (DNF). This changes RRS 35.
- 11.2 Time limit is 60 minutes for the first boat in class and for other boats 30 minutes after the first boat that sails the course.

12 PROTESTS AND PENALTIES

- 12.1 A boat intending to protest or request redress for an incident that occurred while racing must orally notify the race committee on the signal boat as soon as reasonably possible after retiring or finishing by hail or VHF until she receives an oral confirmation from the race committee. This changes RRS 61.1(a).
- 12.2 Written protests and requests for redress must be delivered within the protest time limit to a representative of the protest committee near the official notice board. RRS Appendix T is effect for this event.
- 12.3 The protest time limit will be posted on the official notice board and will be 45 minutes after the end of the last race for the class each day or 10 minutes after the posting of the time limit, whichever is later.
- 12.4 Hearing notices will be posted on the official notice board within 5 minutes after the protest time limit to inform parties of the time and place of the hearing. Hearings may commence at any time if parties are present and prepared; otherwise, hearings may be scheduled as early as 10 minutes after the protest time limit. The posting of hearing notices shall be considered notice as required by RRS 63.2.
- 12.5 A boat may not protest another boat for Sailing Instructions 9.6. This changes RRS 60.1(a).
- 12.6 Penalties under Sailing Instructions 9.6 or 14 may be less than disqualification. This changes RRS 64.1.
- 12.7 RRS Appendix V2, Penalties Taken After a Race, applies.
- 12.8 RRS 44.1 is changed so that the Two-Turns Penalty is replaced by the One-Turn Penalty, except for taking a penalty for an incident that occurred in the zone of a mark, other than a starting mark, that she is required to leave on one side.

13 SCORING

- 13.1 Boats will be scored in class.
- 13.2 A boat that did not start (OCS), did not finish (DNF), retired (RET), or is disqualified (DSQ, DNE, DGM, UFD, BFD) will be scored for the finishing place one more and



Sharing the Sailing Community

a boat that did not start (DNC, DNS) will be scored for the finishing place two more than the number boats starting and finishing and not thereafter retiring or being disqualified. This changes RRS A4.2. RRS A9 is deleted.

13.3 A boat's series score will be the total of her race scores. This changes RRS A2.1. One race will constitute a series.

13.4 Awards will be 1st, 2nd and 3rd in class, and their nature and availability will be communicated to the appropriate owners by CYC upon completion of the event.

14 EQUIPMENT AND OPERATING REQUIREMENTS

14.1 Sailing is an activity that has an inherent risk of damage

and injury. Competitors in this event are participating entirely at their own risk. See RRS 4, Decision to Race. The responsibility for a boat's decision to participate in a race or to continue racing is hers alone. The race organizers (organizing authority, race committee, technical committee, protest committee, host club, sponsors, or any other organization or official) will not be responsible for damage to any boat or other property or the injury to any competitor, including death, sustained as a result of participation in this event. By participating in this event, each competitor agrees to release the race organizers from any and all liability associated with such competitor's participation in this event to the fullest extent permitted by law.

14.2 Boats must check in with the race committee signal boat at the starting area each day before their first warning signal. Boats should check in by hail.

14.3 A boat that retires while racing must orally notify the race committee as soon as reasonably possible after retiring by hail or VHF.

14.4 All boats racing must comply with their one design class rules and regulations, as well as relevant US Sailing Safety Regulations.

14.5 All boats must comply with USCG regulations. All competitors shall also comply with the CYC Crew Limits as noted in the NOR Amendment#1, as well State and County COVID regulations.

14.6 The race committee or technical committee may inspect a boat at any time before or after racing for compliance. 14.7 A boat may put biodegradable sail stops in the water when hoisting a sail. This changes RRS 55.

14.7 In addition to the requirements of RRS Part 2 preamble,

a boat may not impede the passage, cross ahead within $\frac{3}{4}$ nautical miles, or continue to approach within $\frac{1}{4}$ nautical miles (approximately 1500 feet) to the side of a commercial or government vessel over 30 meters in length (including tug and tow) either following a traffic lane or traveling over 15 knots. Boats must follow instruction from the race committee to alter course to avoid vessels based on the race committee's interpretation of these requirements.

15 Coach Boats

15.1 Coach boats should collect their sailors the outside of the Starting Pin side (not the Finishing Pin) of the race course. Pick an area that will not interfere with other racers who are racing or starting. This will help maintain clear separation from those who are still sailing and attempting to finish.

15.2 Coach boats can chase their team members maintaining at least 100 yards separation.

15.3 After the first rounding, coach boats are allowed to approach competitors that are severely lagging in that fleet to give guidance.

15.4 Coach boats shall monitor the posted RC VHF channel.

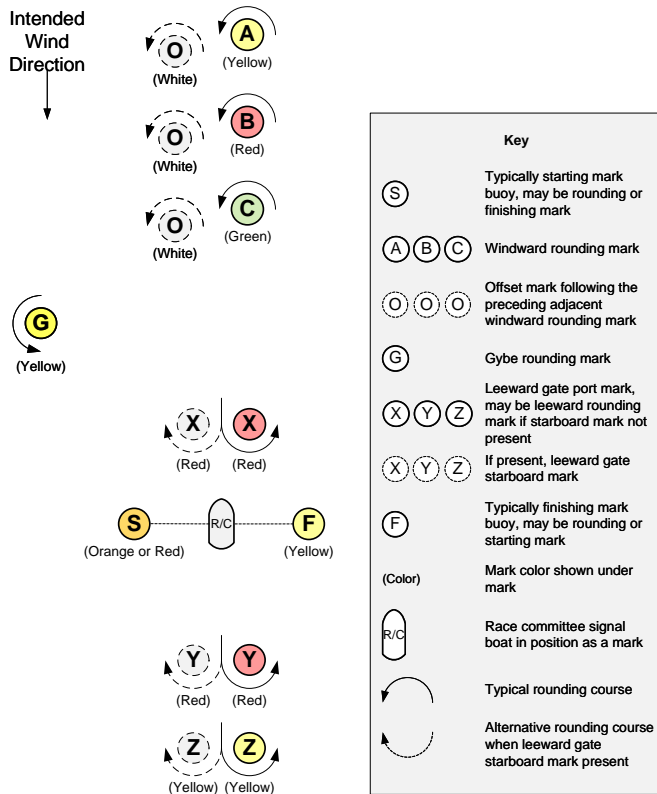
15.5 Coach boats can assist if a safety incident arises and the competitor requests help. If there is a safety incident, please alert the RC to the situation as soon as possible on the RC VHF channel.



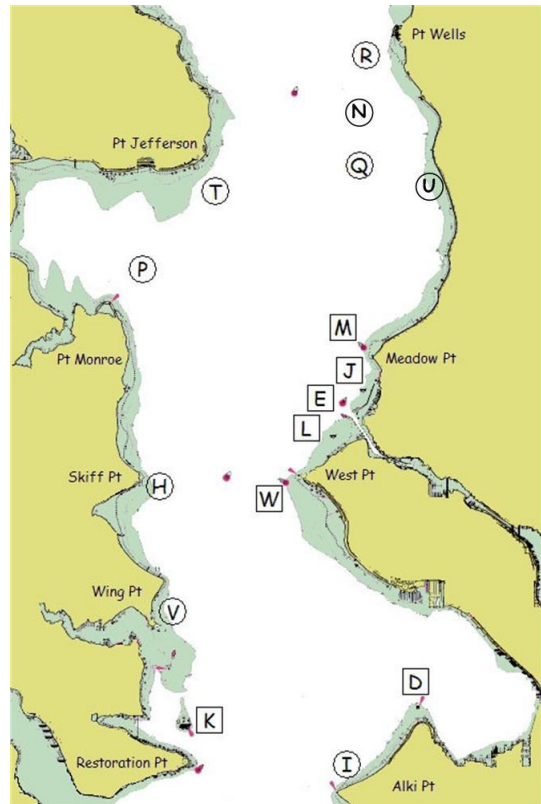
Sharing the Sailing Community

Attachment A: Mark Descriptions

Buoy Course Marks (position relative to R/C)



Geographic Marks (position based on location)



The course diagram for buoy course marks shows the general orientation of the race committee signal boat ("R/C"), other marks (identified by the letters S, A, B, C, O, G, X, Y, Z and F), and the intended wind direction. All buoy course marks other than the race committee signal boat are inflatable buoys. Positions are approximate and the diagram is not to scale.

Notes:

- S When a starting mark for a downwind start, may be on either side of the race committee signal boat.

Bearings are magnetic. Distances are nautical miles (NM). Bearings, distances, and positions are approximate. Each temporary mark is shown with its label in a circle. Each permanent mark is near its label in a square box.

- D Duwamish Head Lt. (LL #16910)
- E Shilshole Bay Entrance Lighted Buoy G "1" (LL #18125)
- H Temporary mark 0.3 NM E of Skiff Pt.
- I Temporary mark 0.5 NM N of Alki Pt.
- J Round ball buoy with flag 0.25 NM SSW of marina N entrance
- K Blakely Rock (LL #16830)
- L White buoy 0.5 NM SW of marina S entrance
- M Meadow Pt. Buoy (LL #16765)
- N Temporary mark 1.0 NM E of Traffic Separation Lane Lighted Buoy SF (LL #16745)
- P Temporary mark 0.5 NM NNE of Pt. Monroe
- Q Temporary mark 3.0 NM bearing 340° from Meadow Pt. Buoy
- R Temporary mark 0.5 NM SW of Pt. Wells
- T Temporary mark 0.5 NM SE of Pt. Jefferson
- U White spar buoy 2.9 NM bearing 6° from Meadow Pt. Buoy at 47° 44.4N, 122° 22.95W
- V Temporary mark 0.3 NM NNE of Wing Pt.
- W West Pt. Buoy (LL #16805)